



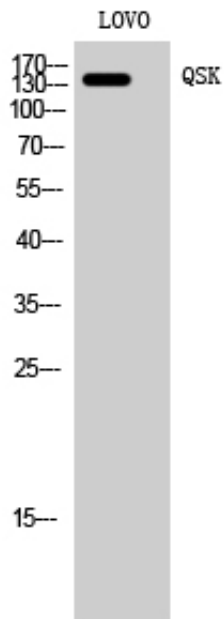
QSK Polyclonal Antibody

Catalog_no :	AT3918
Applications :	WB,IHC-p,ELISA
Reactivity :	Human,Mouse
Category :	抗原抗体
Size :	100µg/50µg/20µg
Gene_name :	SIK3
Protein_name :	Serine/threonine-protein kinase SIK3
Humangene_id :	23387
Humanswissprot_no :	Q9Y2K2
Mousegene_id :	70661
Mouseswissprot_no :	Q6P4S6
Immunogen :	The antiserum was produced against synthesized peptide derived from human QSK. AA range:521-570
Specificity :	QSK Polyclonal Antibody detects endogenous levels of QSK protein.
Formulation :	Liquid in PBS containing 50% glycerol, 0.5% BSA and 0.02% sodium azide.
Source :	Rabbit
Dilution :	Western Blot: 1/500 - 1/2000. Immunohistochemistry: 1/100 - 1/300. ELISA: 1/40000. Not yet tested in other applications.
Purification :	The antibody was affinity-purified from rabbit antiserum by affinity-chromatography using epitope-specific immunogen.
Concentration :	1 mg/ml
Storage_stability :	-20°C/1 year
Msds :	MSDS_Antibody.pdf
Other_name :	SIK3; KIAA0999; QSK; L19; Serine/threonine-protein kinase SIK3; Salt-inducible kinase 3; SIK-3; Serine/threonine-protein kinase QSK
Molecular	140KD



Weight :

Product Images



Western Blot analysis of LOVO cells using QSK Polyclonal Antibody