

Rab 18 Polyclonal Antibody

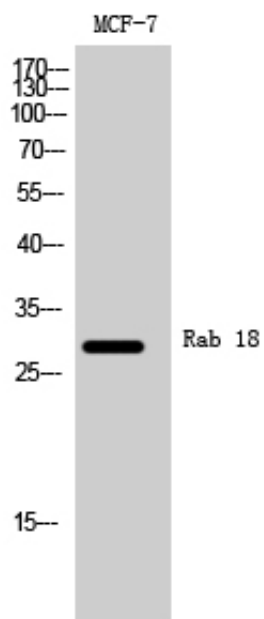
Catalog_no :	AT3920
Applications :	WB,ELISA
Reactivity :	Human,Mouse,Rat
Category :	抗原抗体
Size :	100µg/50µg/20µg
Gene_name :	RAB18
Protein_name :	Ras-related protein Rab-18
Humangene_id :	22931
Humanswissprot_no :	Q9NP72
Mousegene_id :	19330
Mouseswissprot_no :	P35293
Ratgene_id :	307039
Ratswissprot_no :	Q5EB77
Immunogen :	The antiserum was produced against synthesized peptide derived from human RAB18. AA range:103-152
Specificity :	Rab 18 Polyclonal Antibody detects endogenous levels of Rab 18 protein.
Formulation :	Liquid in PBS containing 50% glycerol, 0.5% BSA and 0.02% sodium azide.
Source :	Rabbit
Dilution :	Western Blot: 1/500 - 1/2000. ELISA: 1/10000. Not yet tested in other applications.
Purification :	The antibody was affinity-purified from rabbit antiserum by affinity-chromatography using epitope-specific immunogen.
Concentration :	1 mg/ml
Storage_stability :	-20°C/1 year
Msds :	MSDS_Antibody.pdf



Other_name : RAB18; Ras-related protein Rab-18

Molecular Weight : 28KD

Product Images



Western Blot analysis of MCF-7 cells using Rab 18 Polyclonal Antibody