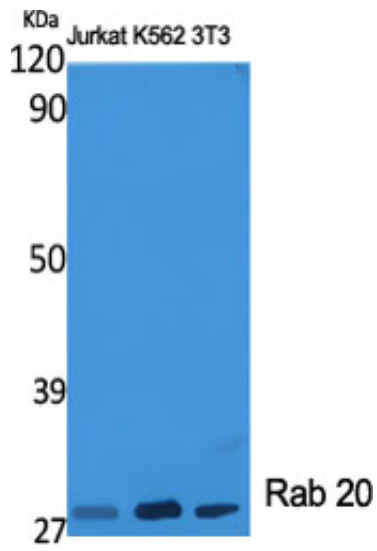




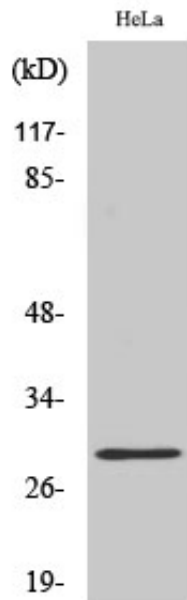
## Rab 20 Polyclonal Antibody

Catalog_no :	AT3922
Applications :	WB,IHC-p,ELISA
Reactivity :	Human
Category :	抗原抗体
Size :	100µg/50µg/20µg
Gene_name :	RAB20
Protein_name :	Ras-related protein Rab-20
Humangene_id :	<a href="#">55647</a>
Humanswissprot_no :	<a href="#">Q9NX57</a>
Immunogen :	The antiserum was produced against synthesized peptide derived from human RAB20. AA range:115-164
Specificity :	Rab 20 Polyclonal Antibody detects endogenous levels of Rab 20 protein.
Formulation :	Liquid in PBS containing 50% glycerol, 0.5% BSA and 0.02% sodium azide.
Source :	Rabbit
Dilution :	Western Blot: 1/500 - 1/2000. Immunohistochemistry: 1/100 - 1/300. ELISA: 1/10000. Not yet tested in other applications.
Purification :	The antibody was affinity-purified from rabbit antiserum by affinity-chromatography using epitope-specific immunogen.
Concentration :	1 mg/ml
Storage_stability :	-20°C/1 year
Msds :	MSDS_Antibody.pdf
Other_name :	RAB20; Ras-related protein Rab-20
Molecular Weight :	28KD

## Product Images



Western Blot analysis of various cells using Rab 20 Polyclonal Antibody diluted at 1 : 2000



Western Blot analysis of A549 cells using Rab 20 Polyclonal Antibody diluted at 1 : 2000