

Rab 2A Polyclonal Antibody

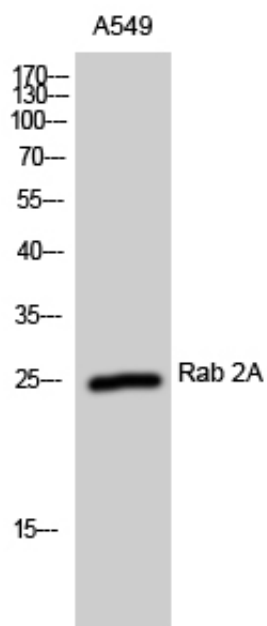
Catalog_no :	AT3924
Applications :	WB,IHC-p,ELISA
Reactivity :	Human,Mouse,Rat
Category :	抗原抗体
Size :	100µg/50µg/20µg
Gene_name :	RAB2A
Protein_name :	Ras-related protein Rab-2A
Humangene_id :	5862
Humanswissprot_no :	P61019
Mousegene_id :	59021
Mouseswissprot_no :	P53994
Ratgene_id :	65158
Ratswissprot_no :	P05712
Immunogen :	The antiserum was produced against synthesized peptide derived from human RAB2A. AA range:84-133
Specificity :	Rab 2A Polyclonal Antibody detects endogenous levels of Rab 2A protein.
Formulation :	Liquid in PBS containing 50% glycerol, 0.5% BSA and 0.02% sodium azide.
Source :	Rabbit
Dilution :	Western Blot: 1/500 - 1/2000. Immunohistochemistry: 1/100 - 1/300. ELISA: 1/20000. Not yet tested in other applications.
Purification :	The antibody was affinity-purified from rabbit antiserum by affinity-chromatography using epitope-specific immunogen.
Concentration :	1 mg/ml
Storage_stability :	-20°C/1 year
Msds :	MSDS_Antibody.pdf



Other_name : RAB2A; RAB2; Ras-related protein Rab-2A

Molecular Weight : 25KD

Product Images



Western Blot analysis of A549 cells using Rab 2A Polyclonal Antibody