

Rab 31 Polyclonal Antibody

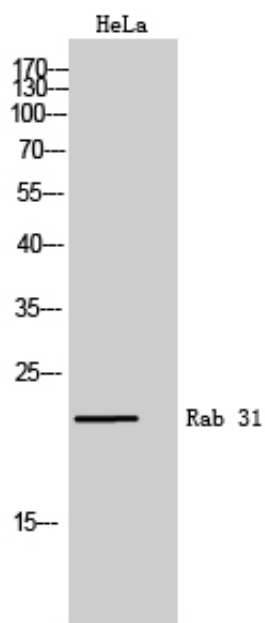
Catalog_no :	<u>AT3928</u>
Applications :	<u>WB,ELISA</u>
Reactivity :	<u>Human,Mouse,Rat</u>
Category :	<u>抗原抗体</u>
Size :	<u>100µg/50µg/20µg</u>
Gene_name :	<u>RAB31</u>
Protein_name :	<u>Ras-related protein Rab-31</u>
Humangene_id	<u>11031</u>
:	<u></u>
Humanswissprot	<u>Q13636</u>
_no :	<u></u>
Mousegene_id :	<u>106572</u>
Mouseswissprot	<u>Q921E2</u>
_no :	<u></u>
Ratgene_id :	<u>246324</u>
Ratswissprot_no	<u>Q6GQP4</u>
:	<u></u>
Immunogen :	<u>Synthesized peptide derived from Rab 31 . at AA range: 50-130</u>
Specificity :	<u>Rab 31 Polyclonal Antibody detects endogenous levels of Rab 31 protein.</u>
Formulation :	<u>Liquid in PBS containing 50% glycerol, 0.5% BSA and 0.02% sodium azide.</u>
Source :	<u>Rabbit</u>
Dilution :	<u>Western Blot: 1/500 - 1/2000. ELISA: 1/20000. Not yet tested in other applications.</u>
Purification :	<u>The antibody was affinity-purified from rabbit antiserum by affinity-chromatography using epitope-specific immunogen.</u>
Concentration :	<u>1 mg/ml</u>
Storage_stability	<u>-20°C/1 year</u>
:	<u></u>
Msds :	<u>MSDS_Antibody.pdf</u>
Other_name :	<u>RAB31; RAB22B; Ras-related protein Rab-31; Ras-related protein Rab-22B</u>



Molecular
Weight :

21KD

Product Images



Western Blot analysis of HeLa cells using Rab 31 Polyclonal Antibody