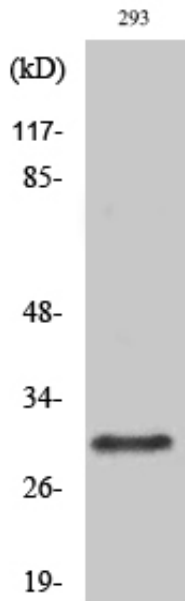




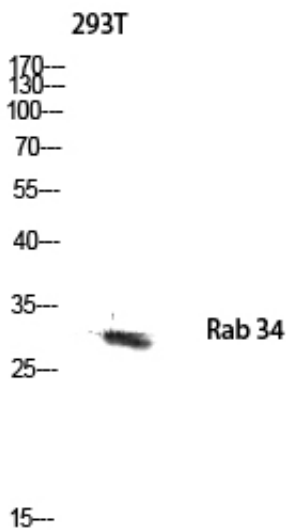
Rab 34 Polyclonal Antibody

Catalog_no :	AT3930
Applications :	WB,IHC-p,ELISA
Reactivity :	Human
Category :	抗原抗体
Size :	100µg/50µg/20µg
Gene_name :	RAB34
Protein_name :	Ras-related protein Rab-34
Humangene_id :	83871
Humanswissprot_no :	Q9BZG1
Immunogen :	The antiserum was produced against synthesized peptide derived from human RAB34. AA range:206-255
Specificity :	Rab 34 Polyclonal Antibody detects endogenous levels of Rab 34 protein.
Formulation :	Liquid in PBS containing 50% glycerol, 0.5% BSA and 0.02% sodium azide.
Source :	Rabbit
Dilution :	Western Blot: 1/500 - 1/2000. Immunohistochemistry: 1/100 - 1/300. ELISA: 1/5000. Not yet tested in other applications.
Purification :	The antibody was affinity-purified from rabbit antiserum by affinity-chromatography using epitope-specific immunogen.
Concentration :	1 mg/ml
Storage_stability :	-20°C/1 year
Msds :	MSDS_Antibody.pdf
Other_name :	RAB34; RAB39; RAH; Ras-related protein Rab-34; Ras-related protein Rab-39; Ras-related protein Rah
Molecular Weight :	29KD

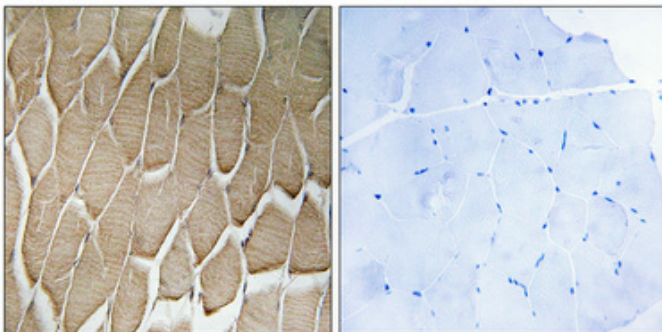
Product Images



Western Blot analysis of various cells using Rab 34 Polyclonal Antibody diluted at 1 : 500



Western blot analysis of 293T lysis using Rab 34 antibody. Antibody was diluted at 1:500



Immunohistochemical analysis of paraffin-embedded Human skeletal muscle. Antibody was diluted at 1:100(4°,overnight). High-pressure and temperature Tris-EDTA,pH8.0 was used for antigen retrieval. Negative contrl (right) obtaned from antibody was pre-absorbed by immunogen peptide.