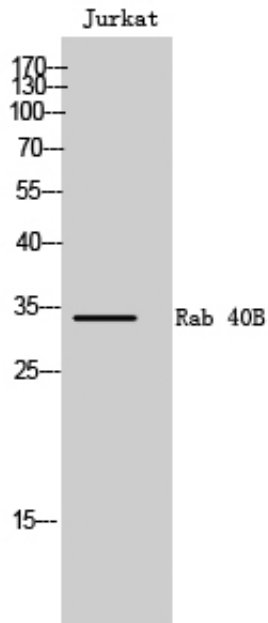


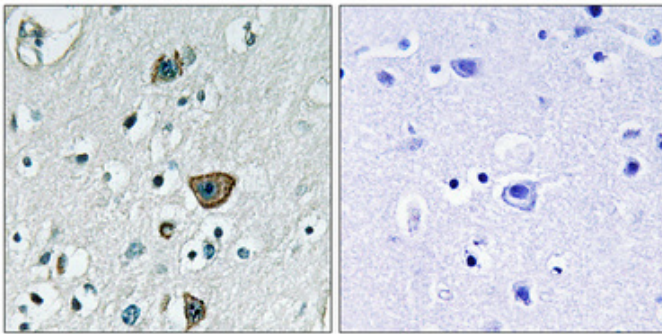
## Rab 40B Polyclonal Antibody

Catalog_no :	AT3934
Applications :	WB,IHC-p,ELISA
Reactivity :	Human
Category :	抗原抗体
Size :	100µg/50µg/20µg
Gene_name :	RAB40B
Protein_name :	Ras-related protein Rab-40B
Humangene_id :	<a href="#">10966</a>
Humanswissprot_no :	<a href="#">Q12829</a>
Immunogen :	The antiserum was produced against synthesized peptide derived from human RAB40B. AA range:229-278
Specificity :	Rab 40B Polyclonal Antibody detects endogenous levels of Rab 40B protein.
Formulation :	Liquid in PBS containing 50% glycerol, 0.5% BSA and 0.02% sodium azide.
Source :	Rabbit
Dilution :	Western Blot: 1/500 - 1/2000. ELISA: 1/40000. Not yet tested in other applications.
Purification :	The antibody was affinity-purified from rabbit antiserum by affinity-chromatography using epitope-specific immunogen.
Concentration :	1 mg/ml
Storage_stability :	-20°C/1 year
Msds :	MSDS_Antibody.pdf
Other_name :	RAB40B; SEC4L; Ras-related protein Rab-40B; SOCS box-containing protein RAR; Protein Rar
Molecular Weight :	34KD

## Product Images



Western Blot analysis of Jurkat cells using Rab 40B Polyclonal Antibody



Immunohistochemical analysis of paraffin-embedded Human brain. Antibody was diluted at 1:100(4°, overnight). High-pressure and temperature Tris-EDTA, pH8.0 was used for antigen retrieval. Negative control (right) obtained from antibody was pre-absorbed by immunogen peptide.