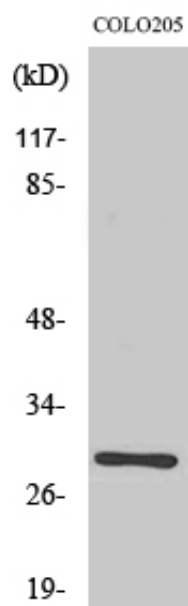




Rab 6C Polyclonal Antibody

Catalog_no :	AT3938
Applications :	WB,ELISA
Reactivity :	Human,Mouse,Rat
Category :	抗原抗体
Size :	100µg/50µg/20µg
Gene_name :	RAB6C
Protein_name :	Ras-related protein Rab-6C
Humangene_id :	84084
Humanswissprot_no :	Q9H0N0
Immunogen :	The antiserum was produced against synthesized peptide derived from human RAB6C. AA range:165-214
Specificity :	Rab 6C Polyclonal Antibody detects endogenous levels of Rab 6C protein.
Formulation :	Liquid in PBS containing 50% glycerol, 0.5% BSA and 0.02% sodium azide.
Source :	Rabbit
Dilution :	Western Blot: 1/500 - 1/2000. ELISA: 1/40000. Not yet tested in other applications.
Purification :	The antibody was affinity-purified from rabbit antiserum by affinity-chromatography using epitope-specific immunogen.
Concentration :	1 mg/ml
Storage_stability :	-20°C/1 year
Msds :	MSDS_Antibody.pdf
Other_name :	RAB6C; WTH3; Ras-related protein Rab-6C; Rab6-like protein WTH3
Molecular Weight :	28KD

Product Images



Western Blot analysis of various cells using Rab 6C Polyclonal Antibody