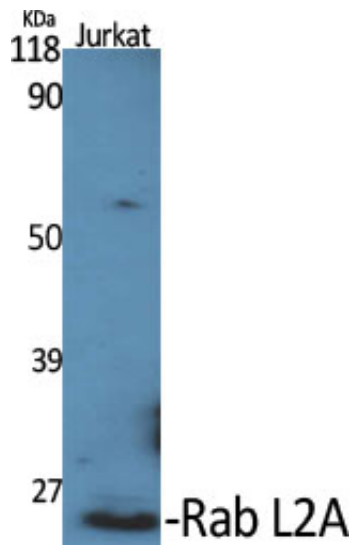


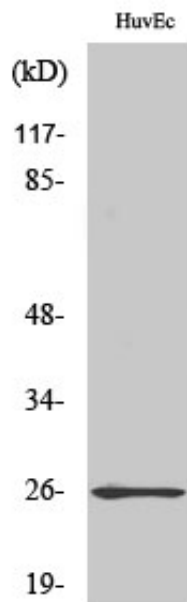
## Rab L2A Polyclonal Antibody

Catalog_no :	AT3940
Applications :	WB,ELISA
Reactivity :	Human
Category :	抗原抗体
Size :	100µg/50µg/20µg
Gene_name :	RABL2A
Protein_name :	Rab-like protein 2A
Humangene_id :	<a href="#">11159</a>
Humanswissprot_no :	<a href="#">Q9UBK7</a>
Immunogen :	The antiserum was produced against synthesized peptide derived from human RABL2A. AA range:179-228
Specificity :	Rab L2A Polyclonal Antibody detects endogenous levels of Rab L2A protein.
Formulation :	Liquid in PBS containing 50% glycerol, 0.5% BSA and 0.02% sodium azide.
Source :	Rabbit
Dilution :	Western Blot: 1/500 - 1/2000. ELISA: 1/20000. Not yet tested in other applications.
Purification :	The antibody was affinity-purified from rabbit antiserum by affinity-chromatography using epitope-specific immunogen.
Concentration :	1 mg/ml
Storage_stability :	-20°C/1 year
Msds :	MSDS_Antibody.pdf
Other_name :	RABL2A; Rab-like protein 2A
Molecular Weight :	30-34KD

## Product Images



Western Blot analysis of various cells using Rab L2A Polyclonal Antibody diluted at 1 : 500



Western Blot analysis of COLO205 cells using Rab L2A Polyclonal Antibody diluted at 1 : 500