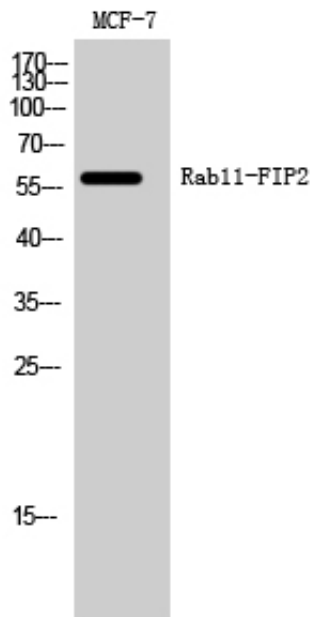




Rab11-FIP2 Polyclonal Antibody

Catalog_no :	AT3943
Applications :	WB,ELISA
Reactivity :	Human,Mouse
Category :	抗原抗体
Size :	100µg/50µg/20µg
Gene_name :	RAB11FIP2
Protein_name :	Rab11 family-interacting protein 2
Humangene_id :	22841
Humanswissprot_no :	Q7L804
Immunogen :	The antiserum was produced against synthesized peptide derived from human RAB11FIP2. AA range:340-389
Specificity :	Rab11-FIP2 Polyclonal Antibody detects endogenous levels of Rab11-FIP2 protein.
Formulation :	Liquid in PBS containing 50% glycerol, 0.5% BSA and 0.02% sodium azide.
Source :	Rabbit
Dilution :	Western Blot: 1/500 - 1/2000. ELISA: 1/10000. Not yet tested in other applications.
Purification :	The antibody was affinity-purified from rabbit antiserum by affinity-chromatography using epitope-specific immunogen.
Concentration :	1 mg/ml
Storage_stability :	-20°C/1 year
Msds :	MSDS_Antibody.pdf
Other_name :	RAB11FIP2; KIAA0941; Rab11 family-interacting protein 2; Rab11-FIP2; NRip11
Molecular Weight :	58KD

Product Images



Western Blot analysis of MCF-7 cells using Rab11-FIP2 Polyclonal Antibody