

## Rab11-FIP4 Polyclonal Antibody

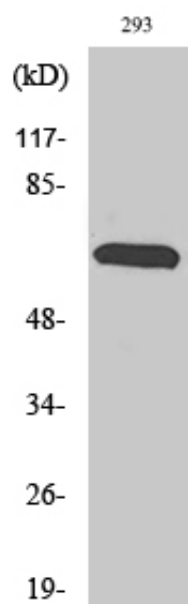
Catalog_no :	AT3945
Applications :	WB,IHC-p,ELISA
Reactivity :	Human,Mouse
Category :	抗原抗体
Size :	100µg/50µg/20µg
Gene_name :	RAB11FIP4
Protein_name :	Rab11 family-interacting protein 4
Humangene_id :	<a href="#">84440</a>
Humanswissprot_no :	<a href="#">Q86YS3</a>
Mousegene_id :	<a href="#">268451</a>
Mouseswissprot_no :	<a href="#">Q8BQP8</a>
Immunogen :	The antiserum was produced against synthesized peptide derived from human RAB11FIP4. AA range:452-501
Specificity :	Rab11-FIP4 Polyclonal Antibody detects endogenous levels of Rab11-FIP4 protein.
Formulation :	Liquid in PBS containing 50% glycerol, 0.5% BSA and 0.02% sodium azide.
Source :	Rabbit
Dilution :	Western Blot: 1/500 - 1/2000. Immunohistochemistry: 1/100 - 1/300. ELISA: 1/40000. Not yet tested in other applications.
Purification :	The antibody was affinity-purified from rabbit antiserum by affinity-chromatography using epitope-specific immunogen.
Concentration :	1 mg/ml
Storage_stability :	-20°C/1 year
Msds :	MSDS_Antibody.pdf
Other_name :	RAB11FIP4; ARFO2; KIAA1821; Rab11 family-interacting protein 4; FIP4-Rab11; Rab11-FIP4; Arfophilin-2
Molecular	72KD



Weight :

---

## Product Images



Western Blot analysis of various cells using Rab11-FIP4 Polyclonal Antibody