



## RAB3IP Polyclonal Antibody

Catalog_no :	<u>AT3946</u>
Applications :	<u>WB,IHC-p,ELISA</u>
Reactivity :	<u>Human,Mouse,Rat</u>
Category :	<u>抗原抗体</u>
Size :	<u>100µg/50µg/20µg</u>
Gene_name :	<u>RAB3IP</u>
Protein_name :	<u>Rab-3A-interacting protein</u>
Humangene_id :	<u><a href="#">117177</a></u>
Humanswissprot_no :	<u><a href="#">Q96QF0</a></u>
Mousegene_id :	<u><a href="#">216363</a></u>
Mouseswissprot_no :	<u><a href="#">Q68EF0</a></u>
Ratswissprot_no :	<u><a href="#">Q62739</a></u>
Immunogen :	<u>The antiserum was produced against synthesized peptide derived from human RAB3IP. AA range:257-306</u>
Specificity :	<u>RAB3IP Polyclonal Antibody detects endogenous levels of RAB3IP protein.</u>
Formulation :	<u>Liquid in PBS containing 50% glycerol, 0.5% BSA and 0.02% sodium azide.</u>
Source :	<u>Rabbit</u>
Dilution :	<u>Western Blot: 1/500 - 1/2000. Immunohistochemistry: 1/100 - 1/300. ELISA: 1/40000. Not yet tested in other applications.</u>
Purification :	<u>The antibody was affinity-purified from rabbit antiserum by affinity-chromatography using epitope-specific immunogen.</u>
Concentration :	<u>1 mg/ml</u>
Storage_stability :	<u>-20°C/1 year</u>
Msds :	<u><a href="#">MSDS_Antibody.pdf</a></u>
Other_name :	<u>RAB3IP; RABIN8; Rab-3A-interacting protein; Rab3A-interacting protein; Rabin-3;</u>



SSX2-interacting protein

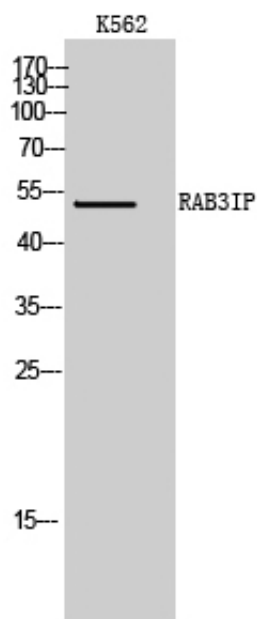
---

Molecular  
Weight :

53KD

---

## Product Images



Western Blot analysis of K562 cells using RAB3IP Polyclonal Antibody