

Rabaptin-5 $\beta$  Polyclonal Antibody

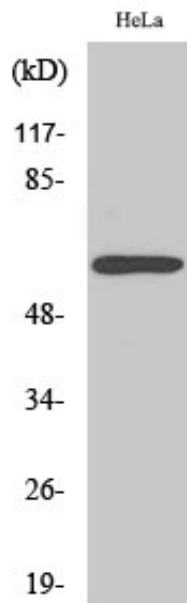
Catalog_no :	AT3948
Applications :	WB,IHC-p,ELISA
Reactivity :	Human,Mouse,Rat
Category :	抗原抗体
Size :	100 $\mu$ g/50 $\mu$ g/20 $\mu$ g
Gene_name :	RABEP2
Protein_name :	Rab GTPase-binding effector protein 2
Humangene_id :	<a href="#">79874</a>
Humanswissprot_no :	<a href="#">Q9H5N1</a>
Mousegene_id :	<a href="#">70314</a>
Mouseswissprot_no :	<a href="#">Q91WG2</a>
Ratgene_id :	<a href="#">80754</a>
Ratswissprot_no :	<a href="#">Q62835</a>
Immunogen :	The antiserum was produced against synthesized peptide derived from human RABEP2. AA range:353-402
Specificity :	Rabaptin-5 $\beta$ Polyclonal Antibody detects endogenous levels of Rabaptin-5 $\beta$ protein.
Formulation :	Liquid in PBS containing 50% glycerol, 0.5% BSA and 0.02% sodium azide.
Source :	Rabbit
Dilution :	Western Blot: 1/500 - 1/2000. Immunohistochemistry: 1/100 - 1/300. ELISA: 1/10000. Not yet tested in other applications.
Purification :	The antibody was affinity-purified from rabbit antiserum by affinity-chromatography using epitope-specific immunogen.
Concentration :	1 mg/ml
Storage_stability :	-20°C/1 year
Msds :	MSDS_Antibody.pdf



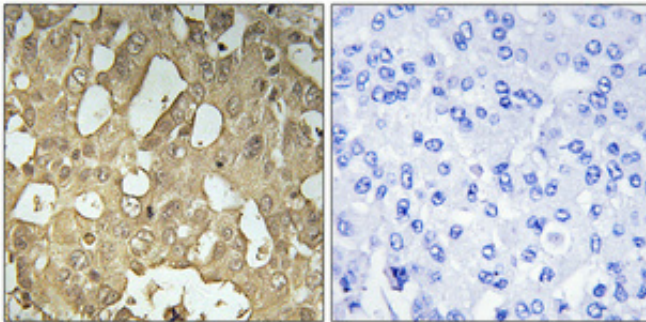
Other\_name : RABEP2; RABPT5B; Rab GTPase-binding effector protein 2; Rabaptin-5beta

Molecular Weight : 64KD

## Product Images



Western Blot analysis of various cells using Rabaptin-5β Polyclonal Antibody



Immunohistochemical analysis of paraffin-embedded Human breast cancer. Antibody was diluted at 1:100(4°, overnight). High-pressure and temperature Tris-EDTA, pH8.0 was used for antigen retrieval. Negative control (right) obtained from antibody was pre-absorbed by immunogen peptide.