



## Rabenosyn-5 Polyclonal Antibody

Catalog_no :	AT3949
Applications :	WB,ELISA
Reactivity :	Human,Mouse
Category :	抗原抗体
Size :	100µg/50µg/20µg
Gene_name :	ZFYVE20
Protein_name :	Rabenosyn-5
Humangene_id :	<a href="#">64145</a>
Humanswissprot_no :	<a href="#">Q9H1K0</a>
Mousegene_id :	<a href="#">78287</a>
Mouseswissprot_no :	<a href="#">Q80Y56</a>
Immunogen :	The antiserum was produced against synthesized peptide derived from human ZFYVE20. AA range:145-194
Specificity :	Rabenosyn-5 Polyclonal Antibody detects endogenous levels of Rabenosyn-5 protein.
Formulation :	Liquid in PBS containing 50% glycerol, 0.5% BSA and 0.02% sodium azide.
Source :	Rabbit
Dilution :	Western Blot: 1/500 - 1/2000. ELISA: 1/10000. Not yet tested in other applications.
Purification :	The antibody was affinity-purified from rabbit antiserum by affinity-chromatography using epitope-specific immunogen.
Concentration :	1 mg/ml
Storage_stability :	-20°C/1 year
Msds :	<a href="#">MSDS_Antibody.pdf</a>
Other_name :	ZFYVE20; Rabenosyn-5; 110 kDa protein; FYVE finger-containing Rab5 effector protein rabenosyn-5; Zinc finger FYVE domain-containing protein 20
Molecular Weight :	89KD

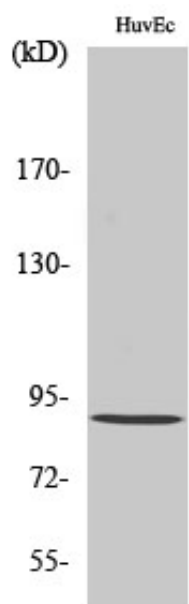


**专注二抗产品**

Biodragon旗下品牌

---

## Product Images



Western Blot analysis of various cells using Rabenosyn-5 Polyclonal Antibody diluted at 1 : 1000