

## Rabphilin-3A Polyclonal Antibody

Catalog_no :	AT3950
Applications :	WB,IHC-p,IF,ELISA
Reactivity :	Human,Mouse,Rat
Category :	抗原抗体
Size :	100µg/50µg/20µg
Gene_name :	RPH3A
Protein_name :	Rabphilin-3A
Humangene_id :	<a href="#">22895</a>
Humanswissprot_no :	<a href="#">Q9Y2J0</a>
Mousegene_id :	<a href="#">19894</a>
Mouseswissprot_no :	<a href="#">P47708</a>
Ratgene_id :	<a href="#">171039</a>
Ratswissprot_no :	<a href="#">P47709</a>
Immunogen :	The antiserum was produced against synthesized peptide derived from human Rabphilin 3A. AA range:203-252
Specificity :	Rabphilin-3A Polyclonal Antibody detects endogenous levels of Rabphilin-3A protein.
Formulation :	Liquid in PBS containing 50% glycerol, 0.5% BSA and 0.02% sodium azide.
Source :	Rabbit
Dilution :	Western Blot: 1/500 - 1/2000. Immunohistochemistry: 1/100 - 1/300. Immunofluorescence: 1/200 - 1/1000. ELISA: 1/5000. Not yet tested in other applications.
Purification :	The antibody was affinity-purified from rabbit antiserum by affinity-chromatography using epitope-specific immunogen.
Concentration :	1 mg/ml
Storage_stability :	-20°C/1 year

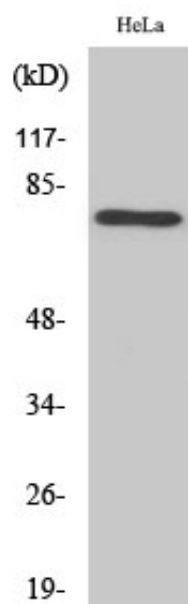


Msd : MSDS\_Antibody.pdf

Other\_name : RPH3A; KIAA0985; Rabphilin-3A; Exophilin-1

Molecular Weight : 75KD

## Product Images



Western Blot analysis of various cells using Rabphilin-3A Polyclonal Antibody