

## Rac GAP1 Polyclonal Antibody

Catalog_no :	AT3953
Applications :	WB,IHC-p,IF,ELISA
Reactivity :	Human,Mouse,Rat,Monkey
Category :	抗原抗体
Size :	100µg/50µg/20µg
Gene_name :	RACGAP1
Protein_name :	Rac GTPase-activating protein 1
Humangene_id :	<a href="#">29127</a>
Humanswissprot_no :	<a href="#">Q9H0H5</a>
Mousegene_id :	<a href="#">26934</a>
Mouseswissprot_no :	<a href="#">Q9WVM1</a>
Immunogen :	The antiserum was produced against synthesized peptide derived from human GTPase Activating Protein. AA range:353-402
Specificity :	Rac GAP1 Polyclonal Antibody detects endogenous levels of Rac GAP1 protein.
Formulation :	Liquid in PBS containing 50% glycerol, 0.5% BSA and 0.02% sodium azide.
Source :	Rabbit
Dilution :	Western Blot: 1/500 - 1/2000. Immunohistochemistry: 1/100 - 1/300. Immunofluorescence: 1/200 - 1/1000. ELISA: 1/40000. Not yet tested in other applications.
Purification :	The antibody was affinity-purified from rabbit antiserum by affinity-chromatography using epitope-specific immunogen.
Concentration :	1 mg/ml
Storage_stability :	-20°C/1 year
Msds :	<a href="#">MSDS_Antibody.pdf</a>
Other_name :	RACGAP1; KIAA1478; MGCRACGAP; Rac GTPase-activating protein 1; Male germ cell RacGap; MgcRacGAP; Protein CYK4 homolog; CYK4; HsCYK-4

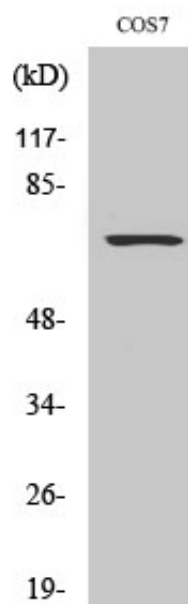


Molecular  
Weight :

72KD

---

## Product Images



Western Blot analysis of various cells using Rac GAP1 Polyclonal Antibody