

Rac1/2/3/CDC42 Polyclonal Antibody

Catalog_no :	<u>AT3954</u>
Applications :	<u>WB,IHC-p,ELISA</u>
Reactivity :	<u>Human,Mouse,Rat</u>
Category :	<u>抗原抗体</u>
Size :	<u>100µg/50µg/20µg</u>
Gene_name :	<u>RAC3</u>
Protein_name :	<u>Ras-related C3 botulinum toxin substrate 3</u>
Humangene_id :	<u>5879/5880/5881/998</u>
Humanswissprot_no :	<u>P63000/P15153/P60763/P60953</u>
Mousegene_id :	<u>19353/19354/170758/12540</u>
Ratgene_id :	<u>363875/64465</u>
Ratswissprot_no :	<u>Q6RUV5/Q8CFN2</u>
Immunogen :	<u>The antiserum was produced against synthesized peptide derived from human Rac1/CDC42. AA range:38-87</u>
Specificity :	<u>Rac1/2/3/CDC42 Polyclonal Antibody detects endogenous levels of Rac1/2/3/CDC42 protein.</u>
Formulation :	<u>Liquid in PBS containing 50% glycerol, 0.5% BSA and 0.02% sodium azide.</u>
Source :	<u>Rabbit</u>
Dilution :	<u>Western Blot: 1/500 - 1/2000. Immunohistochemistry: 1/100 - 1/300. ELISA: 1/20000. Not yet tested in other applications.</u>
Purification :	<u>The antibody was affinity-purified from rabbit antiserum by affinity-chromatography using epitope-specific immunogen.</u>
Concentration :	<u>1 mg/ml</u>
Storage_stability :	<u>-20°C/1 year</u>
Msds :	<u>MSDS_Antibody.pdf</u>
Other_name :	<u>RAC1; TC25; MIG5; Ras-related C3 botulinum toxin substrate 1; Cell migration-inducing</u>

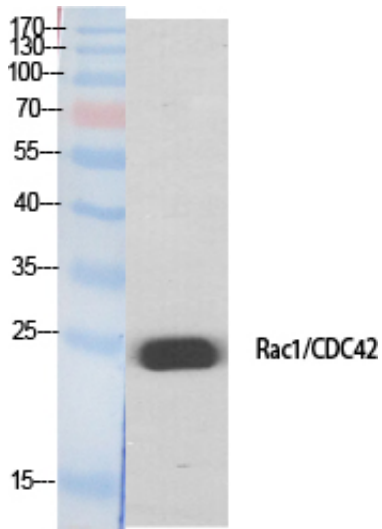


gene 5 protein; Ras-like protein TC25; p21-Rac1; RAC2; Ras-related C3 botulinum toxin substrate 2; GX; Small G protein; p21-Rac2; RAC3; Ras-related C3 bot

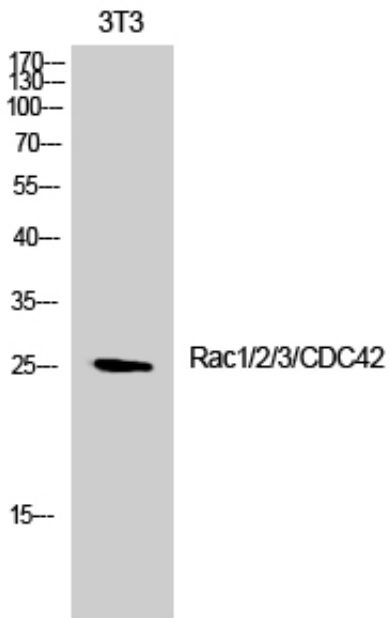
Molecular
Weight :

26KD

Product Images



Western Blot analysis of various cells using Rac1/2/3/CDC42 Polyclonal Antibody



Western Blot analysis of 3T3 cells using Rac1/2/3/CDC42 Polyclonal Antibody