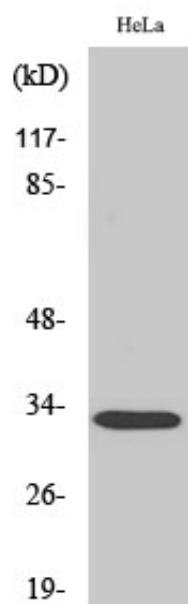


## Rad GTPase Polyclonal Antibody

Catalog_no :	AT3956
Applications :	WB,IHC-p,IF,ELISA
Reactivity :	Human
Category :	抗原抗体
Size :	100µg/50µg/20µg
Gene_name :	RRAD
Protein_name :	GTP-binding protein RAD
Humangene_id :	<a href="#">6236</a>
Humanswissprot_no :	<a href="#">P55042</a>
Immunogen :	The antiserum was produced against synthesized peptide derived from human RAD. AA range:41-90
Specificity :	Rad GTPase Polyclonal Antibody detects endogenous levels of Rad GTPase protein.
Formulation :	Liquid in PBS containing 50% glycerol, 0.5% BSA and 0.02% sodium azide.
Source :	Rabbit
Dilution :	Western Blot: 1/500 - 1/2000. Immunohistochemistry: 1/100 - 1/300. Immunofluorescence: 1/200 - 1/1000. ELISA: 1/20000. Not yet tested in other applications.
Purification :	The antibody was affinity-purified from rabbit antiserum by affinity-chromatography using epitope-specific immunogen.
Concentration :	1 mg/ml
Storage_stability :	-20°C/1 year
Msds :	MSDS_Antibody.pdf
Other_name :	RRAD; RAD; GTP-binding protein RAD; RAD1; Ras associated with diabetes
Molecular Weight :	33KD

## Product Images



Western Blot analysis of various cells using Rad GTPase Polyclonal Antibody