

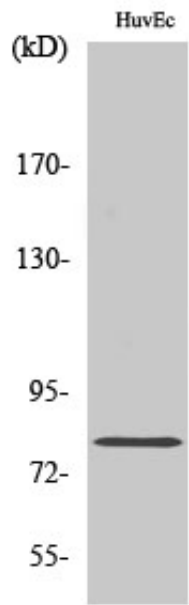
Rad17 Polyclonal Antibody

Catalog_no :	AT3957
Applications :	WB,IHC-p,IF,ELISA
Reactivity :	Human,Mouse
Category :	抗原抗体
Size :	100µg/50µg/20µg
Gene_name :	RAD17
Protein_name :	Cell cycle checkpoint protein RAD17
Humangene_id :	5884
Humanswissprot_no :	O75943
Mousegene_id :	19356
Mouseswissprot_no :	Q6NXW6
Immunogen :	The antiserum was produced against synthesized peptide derived from human RAD17. AA range:621-670
Specificity :	Rad17 Polyclonal Antibody detects endogenous levels of Rad17 protein.
Formulation :	Liquid in PBS containing 50% glycerol, 0.5% BSA and 0.02% sodium azide.
Source :	Rabbit
Dilution :	Western Blot: 1/500 - 1/2000. Immunohistochemistry: 1/100 - 1/300. Immunofluorescence: 1/200 - 1/1000. ELISA: 1/10000. Not yet tested in other applications.
Purification :	The antibody was affinity-purified from rabbit antiserum by affinity-chromatography using epitope-specific immunogen.
Concentration :	1 mg/ml
Storage_stability :	-20°C/1 year
Msds :	MSDS_Antibody.pdf
Other_name :	RAD17; R24L; Cell cycle checkpoint protein RAD17; hRad17; RF-C/activator 1 homolog
Molecular	86KD



Weight :

Product Images



Western Blot analysis of various cells using Rad17 Polyclonal Antibody