

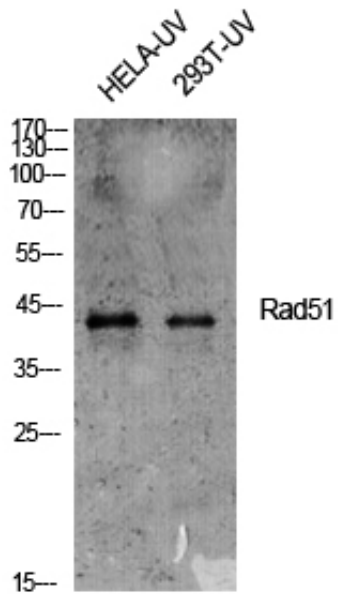
Rad51 Polyclonal Antibody

Catalog_no :	AT3965
Applications :	WB,IHC-p,ELISA
Reactivity :	Human,Mouse
Category :	抗原抗体
Size :	100µg/50µg/20µg
Gene_name :	RAD51
Protein_name :	DNA repair protein RAD51 homolog 1
Humangene_id :	5888
Humanswissprot_no :	Q06609
Mousegene_id :	19361
Mouseswissprot_no :	Q08297
Immunogen :	The antiserum was produced against synthesized peptide derived from human RAD51. AA range:281-330
Specificity :	Rad51 Polyclonal Antibody detects endogenous levels of Rad51 protein.
Formulation :	Liquid in PBS containing 50% glycerol, 0.5% BSA and 0.02% sodium azide.
Source :	Rabbit
Dilution :	Western Blot: 1/500 - 1/2000. Immunohistochemistry: 1/100 - 1/300. ELISA: 1/20000. Not yet tested in other applications.
Purification :	The antibody was affinity-purified from rabbit antiserum by affinity-chromatography using epitope-specific immunogen.
Concentration :	1 mg/ml
Storage_stability :	-20°C/1 year
Msds :	MSDS_Antibody.pdf
Other_name :	RAD51; RAD51A; RECA; DNA repair protein RAD51 homolog 1; HsRAD51; hRAD51; RAD51 homolog A
Molecular	42KD

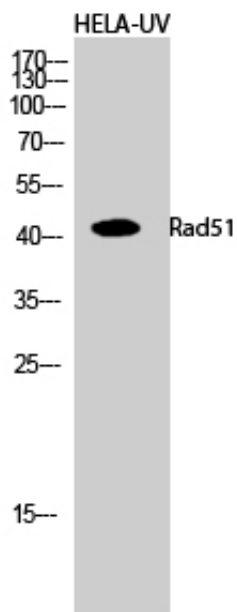


Weight :

Product Images



Western Blot analysis of various cells using Rad51 Polyclonal Antibody diluted at 1 : 500 cells nucleus extracted by Minute TM Cytoplasmic and Nuclear Fractionation kit (SC-003, Inventbiotech, MN, USA).



Western Blot analysis of HELA-UV cells using Rad51 Polyclonal Antibody diluted at 1 : 500 cells nucleus extracted by Minute TM Cytoplasmic and Nuclear Fractionation kit (SC-003, Inventbiotech, MN, USA).