

## Rad52 Polyclonal Antibody

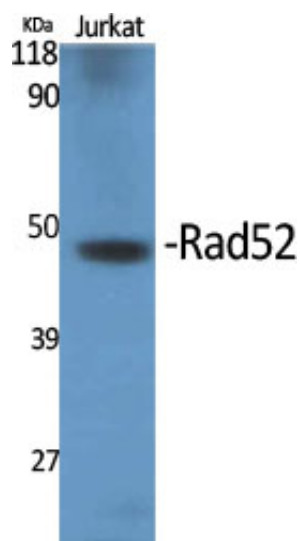
Catalog_no :	AT3969
Applications :	WB,IHC-p,IF,ELISA
Reactivity :	Human,Mouse
Category :	抗原抗体
Size :	100µg/50µg/20µg
Gene_name :	RAD52
Protein_name :	DNA repair protein RAD52 homolog
Humangene_id :	<a href="#">5893</a>
Humanswissprot_no :	<a href="#">P43351</a>
Mousegene_id :	<a href="#">19365</a>
Mouseswissprot_no :	<a href="#">P43352</a>
Immunogen :	The antiserum was produced against synthesized peptide derived from human RAD52. AA range:70-119
Specificity :	Rad52 Polyclonal Antibody detects endogenous levels of Rad52 protein.
Formulation :	Liquid in PBS containing 50% glycerol, 0.5% BSA and 0.02% sodium azide.
Source :	Rabbit
Dilution :	Western Blot: 1/500 - 1/2000. Immunohistochemistry: 1/100 - 1/300. Immunofluorescence: 1/200 - 1/1000. ELISA: 1/10000. Not yet tested in other applications.
Purification :	The antibody was affinity-purified from rabbit antiserum by affinity-chromatography using epitope-specific immunogen.
Concentration :	1 mg/ml
Storage_stability :	-20°C/1 year
Msds :	<a href="#">MSDS_Antibody.pdf</a>
Other_name :	RAD52; DNA repair protein RAD52 homolog
Molecular	46KD



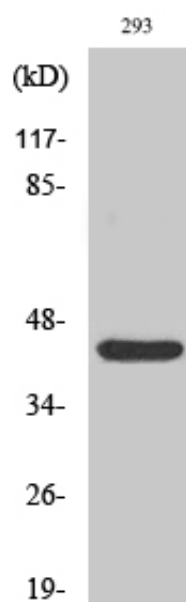
Weight :

---

## Product Images



Western Blot analysis of various cells using Rad52 Polyclonal Antibody cells nucleus extracted by Minute TM Cytoplasmic and Nuclear Fractionation kit (SC-003, Inventbiotech, MN, USA).



Western Blot analysis of 293 cells using Rad52 Polyclonal Antibody cells nucleus extracted by Minute TM Cytoplasmic and Nuclear Fractionation kit (SC-003, Inventbiotech, MN, USA).