

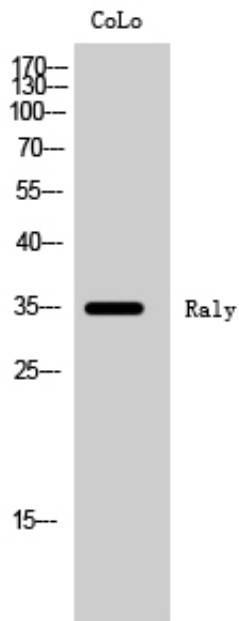
Raly Polyclonal Antibody

Catalog_no :	AT3997
Applications :	WB,ELISA
Reactivity :	Human,Mouse,Rat
Category :	抗原抗体
Size :	100µg/50µg/20µg
Gene_name :	RALY
Protein_name :	RNA-binding protein Raly
Humangene_id :	22913
Humanswissprot_no :	Q9UKM9
Mousegene_id :	19383
Mouseswissprot_no :	Q64012
Immunogen :	The antiserum was produced against synthesized peptide derived from human RALY. AA range:71-120
Specificity :	Raly Polyclonal Antibody detects endogenous levels of Raly protein.
Formulation :	Liquid in PBS containing 50% glycerol, 0.5% BSA and 0.02% sodium azide.
Source :	Rabbit
Dilution :	Western Blot: 1/500 - 1/2000. ELISA: 1/10000. Not yet tested in other applications.
Purification :	The antibody was affinity-purified from rabbit antiserum by affinity-chromatography using epitope-specific immunogen.
Concentration :	1 mg/ml
Storage_stability :	-20°C/1 year
Msds :	MSDS_Antibody.pdf
Other_name :	RALY; HNRPCL2; P542; RNA-binding protein Raly; Autoantigen p542; Heterogeneous nuclear ribonucleoprotein C-like 2; hnRNP core protein C-like 2; hnRNP associated with lethal yellow protein homolog
Molecular	35KD



Weight :

Product Images



Western Blot analysis of CoLo cells using Raly Polyclonal Antibody cells nucleus extracted by Minute TM Cytoplasmic and Nuclear Fractionation kit (SC-003, Inventbiotech, MN, USA).