

Ran Polyclonal Antibody

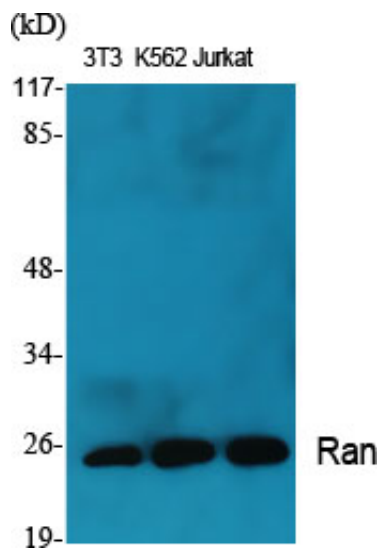
Catalog_no :	AT3998
Applications :	WB,IHC-p,ELISA
Reactivity :	Human,Mouse,Rat
Category :	抗原抗体
Size :	100µg/50µg/20µg
Gene_name :	RAN
Protein_name :	GTP-binding nuclear protein Ran
Humangene_id	5901
:	
Humanswissprot	P62826
_no :	
Mousegene_id :	1.00046e+008
Mouseswissprot	P62827
_no :	
Ratgene_id :	84509
Ratswissprot_no	P62828
:	
Immunogen :	The antiserum was produced against synthesized peptide derived from human RAN. AA range:167-216
Specificity :	Ran Polyclonal Antibody detects endogenous levels of Ran protein.
Formulation :	Liquid in PBS containing 50% glycerol, 0.5% BSA and 0.02% sodium azide.
Source :	Rabbit
Dilution :	Western Blot: 1/500 - 1/2000. Immunohistochemistry: 1/100 - 1/300. ELISA: 1/10000. Not yet tested in other applications.
Purification :	The antibody was affinity-purified from rabbit antiserum by affinity-chromatography using epitope-specific immunogen.
Concentration :	1 mg/ml
Storage_stability	-20°C/1 year
:	
Msds :	MSDS_Antibody.pdf



Other_name : RAN; ARA24; OK/SW-cl.81; GTP-binding nuclear protein Ran; Androgen receptor-associated protein 24; GTPase Ran; Ras-like protein TC4; Ras-related nuclear protein

Molecular Weight : 25KD

Product Images



Western Blot analysis of various cells using Ran Polyclonal Antibody diluted at 1 : 2000