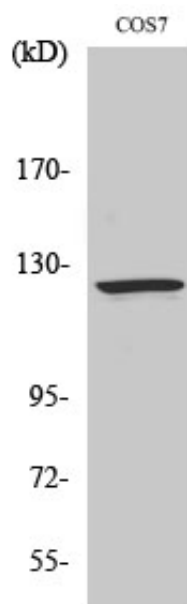




Ran BP-6 Polyclonal Antibody

Catalog_no :	AT4000
Applications :	WB,ELISA
Reactivity :	Human,Mouse,Rat,Monkey
Category :	抗原抗体
Size :	100µg/50µg/20µg
Gene_name :	RANBP6
Protein_name :	Ran-binding protein 6
Humangene_id :	26953
Humanswissprot_no :	O60518
Mousegene_id :	240614
Mouseswissprot_no :	Q8BIV3
Immunogen :	The antiserum was produced against synthesized peptide derived from human RANBP6. AA range:800-849
Specificity :	Ran BP-6 Polyclonal Antibody detects endogenous levels of Ran BP-6 protein.
Formulation :	Liquid in PBS containing 50% glycerol, 0.5% BSA and 0.02% sodium azide.
Source :	Rabbit
Dilution :	Western Blot: 1/500 - 1/2000. ELISA: 1/10000. Not yet tested in other applications.
Purification :	The antibody was affinity-purified from rabbit antiserum by affinity-chromatography using epitope-specific immunogen.
Concentration :	1 mg/ml
Storage_stability :	-20°C/1 year
Msds :	MSDS_Antibody.pdf
Other_name :	RANBP6; Ran-binding protein 6; RanBP6
Molecular Weight :	125KD

Product Images



Western Blot analysis of various cells using Ran BP-6 Polyclonal Antibody