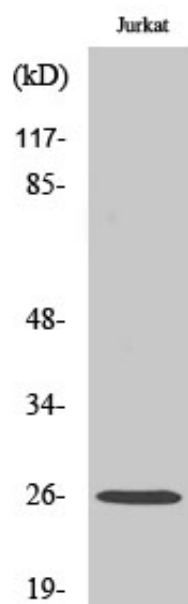




## Rap 2C Polyclonal Antibody

Catalog_no :	AT4004
Applications :	WB,ELISA
Reactivity :	Human,Mouse
Category :	抗原抗体
Size :	100µg/50µg/20µg
Gene_name :	RAP2C
Protein_name :	Ras-related protein Rap-2c
Humangene_id :	<a href="#">57826</a>
Humanswissprot_no :	<a href="#">Q9Y3L5</a>
Mousegene_id :	<a href="#">72065</a>
Mouseswissprot_no :	<a href="#">Q8BU31</a>
Immunogen :	The antiserum was produced against synthesized peptide derived from human RAP2C. AA range:97-146
Specificity :	Rap 2C Polyclonal Antibody detects endogenous levels of Rap 2C protein.
Formulation :	Liquid in PBS containing 50% glycerol, 0.5% BSA and 0.02% sodium azide.
Source :	Rabbit
Dilution :	Western Blot: 1/500 - 1/2000. ELISA: 1/5000. Not yet tested in other applications.
Purification :	The antibody was affinity-purified from rabbit antiserum by affinity-chromatography using epitope-specific immunogen.
Concentration :	1 mg/ml
Storage_stability :	-20°C/1 year
Msds :	<a href="#">MSDS_Antibody.pdf</a>
Other_name :	RAP2C; Ras-related protein Rap-2c
Molecular Weight :	26KD

## Product Images



Western Blot analysis of various cells using Rap 2C Polyclonal Antibody diluted at 1 : 500