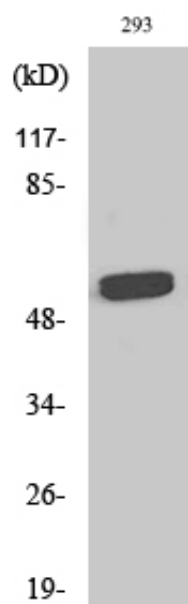




RAP1 Polyclonal Antibody

Catalog_no :	AT4005
Applications :	WB,ELISA
Reactivity :	Human
Category :	抗原抗体
Size :	100µg/50µg/20µg
Gene_name :	TERF2IP
Protein_name :	Telomeric repeat-binding factor 2-interacting protein 1
Humangene_id :	54386
Humanswissprot_no :	Q9NYB0
Immunogen :	The antiserum was produced against synthesized peptide derived from human RAP1. AA range:203-252
Specificity :	RAP1 Polyclonal Antibody detects endogenous levels of RAP1 protein.
Formulation :	Liquid in PBS containing 50% glycerol, 0.5% BSA and 0.02% sodium azide.
Source :	Rabbit
Dilution :	Western Blot: 1/500 - 1/2000. ELISA: 1/10000. Not yet tested in other applications.
Purification :	The antibody was affinity-purified from rabbit antiserum by affinity-chromatography using epitope-specific immunogen.
Concentration :	1 mg/ml
Storage_stability :	-20°C/1 year
Msds :	MSDS_Antibody.pdf
Other_name :	TERF2IP; DRIP5; RAP1; PP8000; Telomeric repeat-binding factor 2-interacting protein 1; TERF2-interacting telomeric protein 1; TRF2-interacting telomeric protein 1; Dopamine receptor-interacting protein 5; Repressor/activator protein 1 homol
Molecular Weight :	55KD

Product Images



Western Blot analysis of various cells using RAP1 Polyclonal Antibody diluted at 1 : 500