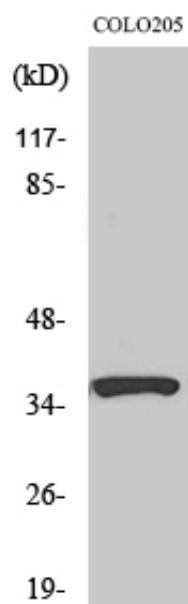




RASSF4 Polyclonal Antibody

Catalog_no :	AT4012
Applications :	WB,ELISA
Reactivity :	Human,Rat
Category :	抗原抗体
Size :	100µg/50µg/20µg
Gene_name :	RASSF4
Protein_name :	Ras association domain-containing protein 4
Humangene_id :	83937
Humanswissprot_no :	Q9H2L5
Ratgene_id :	362423
Ratswissprot_no :	Q566C5
Immunogen :	The antiserum was produced against synthesized peptide derived from human RASSF4. AA range:134-183
Specificity :	RASSF4 Polyclonal Antibody detects endogenous levels of RASSF4 protein.
Formulation :	Liquid in PBS containing 50% glycerol, 0.5% BSA and 0.02% sodium azide.
Source :	Rabbit
Dilution :	Western Blot: 1/500 - 1/2000. ELISA: 1/10000. Not yet tested in other applications.
Purification :	The antibody was affinity-purified from rabbit antiserum by affinity-chromatography using epitope-specific immunogen.
Concentration :	1 mg/ml
Storage_stability :	-20°C/1 year
Msds :	MSDS_Antibody.pdf
Other_name :	RASSF4; AD037; Ras association domain-containing protein 4
Molecular Weight :	37KD

Product Images



Western Blot analysis of various cells using RASSF4 Polyclonal Antibody