

## RBM16 Polyclonal Antibody

Catalog_no :	<u>AT4026</u>
Applications :	<u>WB,ELISA</u>
Reactivity :	<u>Human,Mouse,Rat</u>
Category :	<u>抗原抗体</u>
Size :	<u>100µg/50µg/20µg</u>
Gene_name :	<u>SCAF8</u>
Protein_name :	<u>Protein SCAF8</u>
Humangene_id :	<u><a href="#">22828</a></u>
Humanswissprot_no :	<u><a href="#">Q9UPN6</a></u>
Mousegene_id :	<u><a href="#">106583</a></u>
Mouseswissprot_no :	<u><a href="#">Q6DID3</a></u>
Ratgene_id :	<u><a href="#">245926</a></u>
Ratswissprot_no :	<u><a href="#">Q63623</a></u>
Immunogen :	<u>Synthesized peptide derived from RBM16 . at AA range: 550-630</u>
Specificity :	<u>RBM16 Polyclonal Antibody detects endogenous levels of RBM16 protein.</u>
Formulation :	<u>Liquid in PBS containing 50% glycerol, 0.5% BSA and 0.02% sodium azide.</u>
Source :	<u>Rabbit</u>
Dilution :	<u>Western Blot: 1/500 - 1/2000. ELISA: 1/10000. Not yet tested in other applications.</u>
Purification :	<u>The antibody was affinity-purified from rabbit antiserum by affinity-chromatography using epitope-specific immunogen.</u>
Concentration :	<u>1 mg/ml</u>
Storage_stability :	<u>-20°C/1 year</u>
Msds :	<u><a href="#">MSDS_Antibody.pdf</a></u>
Other_name :	<u>SCAF8; CCAP7; KIAA1116; RBM16; Protein SCAF8; CDC5L complex-associated protein 7;</u>



RNA-binding motif protein 16; SR-related and CTD-associated factor 8

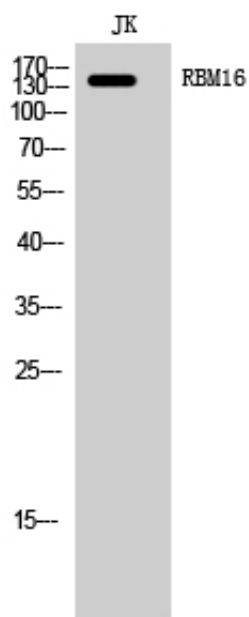
---

Molecular  
Weight :

140KD

---

## Product Images



Western Blot analysis of JK cells using RBM16 Polyclonal Antibody cells nucleus extracted by Minute TM Cytoplasmic and Nuclear Fractionation kit (SC-003, Inventbiotech, MN, USA).