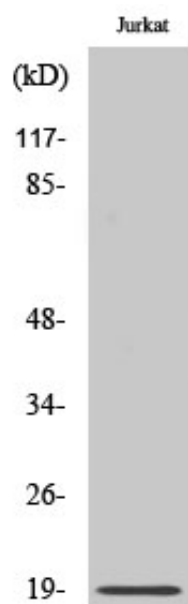




RCL Polyclonal Antibody

Catalog_no :	AT4032
Applications :	WB,ELISA
Reactivity :	Human
Category :	抗原抗体
Size :	100µg/50µg/20µg
Gene_name :	RCL
Protein_name :	Deoxyribonucleoside 5'-monophosphate N-glycosidase
Humangene_id :	10591
Humanswissprot_no :	O43598
Immunogen :	The antiserum was produced against synthesized peptide derived from human RCL. AA range:1-50
Specificity :	RCL Polyclonal Antibody detects endogenous levels of RCL protein.
Formulation :	Liquid in PBS containing 50% glycerol, 0.5% BSA and 0.02% sodium azide.
Source :	Rabbit
Dilution :	Western Blot: 1/500 - 1/2000. ELISA: 1/40000. Not yet tested in other applications.
Purification :	The antibody was affinity-purified from rabbit antiserum by affinity-chromatography using epitope-specific immunogen.
Concentration :	1 mg/ml
Storage_stability :	-20°C/1 year
Msds :	MSDS_Antibody.pdf
Other_name :	RCL; C6orf108; Deoxyribonucleoside 5'-monophosphate N-glycosidase; c-Myc-responsive protein Rcl
Molecular Weight :	22KD

Product Images



Western Blot analysis of various cells using RCL Polyclonal Antibody