



RCL1 Polyclonal Antibody

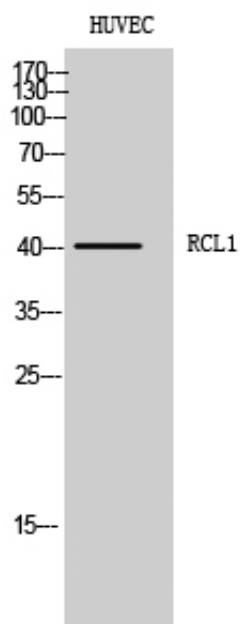
Catalog_no :	AT4033
Applications :	WB,ELISA
Reactivity :	Human,Mouse,Rat
Category :	抗原抗体
Size :	100µg/50µg/20µg
Gene_name :	RCL1
Protein_name :	RNA 3'-terminal phosphate cyclase-like protein
Humangene_id :	10171
Humanswissprot_no :	Q9Y2P8
Mousegene_id :	59028
Mouseswissprot_no :	Q9JIT0
Immunogen :	The antiserum was produced against synthesized peptide derived from human RCL1. AA range:324-373
Specificity :	RCL1 Polyclonal Antibody detects endogenous levels of RCL1 protein.
Formulation :	Liquid in PBS containing 50% glycerol, 0.5% BSA and 0.02% sodium azide.
Source :	Rabbit
Dilution :	Western Blot: 1/500 - 1/2000. ELISA: 1/40000. Not yet tested in other applications.
Purification :	The antibody was affinity-purified from rabbit antiserum by affinity-chromatography using epitope-specific immunogen.
Concentration :	1 mg/ml
Storage_stability :	-20°C/1 year
Msds :	MSDS_Antibody.pdf
Other_name :	RCL1; RNAC; RPC2; RPCL1; RTC2; HSPC338; RNA 3'-terminal phosphate cyclase-like protein
Molecular Weight :	41KD



专注二抗产品

Biodragon旗下品牌

Product Images



Western Blot analysis of HUVEC cells using RCL1 Polyclonal Antibody cells nucleus extracted by Minute TM Cytoplasmic and Nuclear Fractionation kit (SC-003, Inventbiotech, MN, USA).