



## Recoverin Polyclonal Antibody

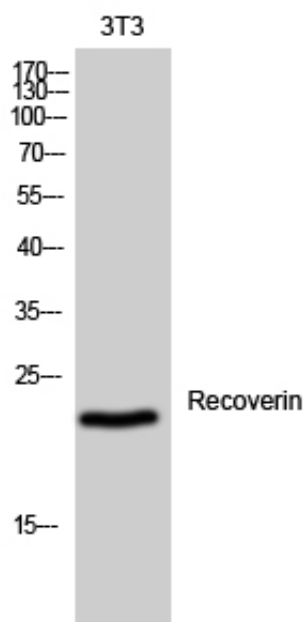
Catalog_no :	AT4037
Applications :	WB,IHC-p,IF,ELISA
Reactivity :	Human,Mouse
Category :	抗原抗体
Size :	100µg/50µg/20µg
Gene_name :	RCVRN
Protein_name :	Recoverin
Humangene_id :	<a href="#">5957</a>
Humanswissprot_no :	<a href="#">P35243</a>
Mousegene_id :	<a href="#">19674</a>
Mouseswissprot_no :	<a href="#">P34057</a>
Immunogen :	The antiserum was produced against synthesized peptide derived from human Recoverin. AA range:107-156
Specificity :	Recoverin Polyclonal Antibody detects endogenous levels of Recoverin protein.
Formulation :	Liquid in PBS containing 50% glycerol, 0.5% BSA and 0.02% sodium azide.
Source :	Rabbit
Dilution :	Western Blot: 1/500 - 1/2000. Immunohistochemistry: 1/100 - 1/300. Immunofluorescence: 1/200 - 1/1000. ELISA: 1/20000. Not yet tested in other applications.
Purification :	The antibody was affinity-purified from rabbit antiserum by affinity-chromatography using epitope-specific immunogen.
Concentration :	1 mg/ml
Storage_stability :	-20°C/1 year
Msds :	<a href="#">MSDS_Antibody.pdf</a>
Other_name :	RCVRN; RCV1; Recoverin; Cancer-associated retinopathy protein; Protein CAR
Molecular	23KD



Weight :

---

## Product Images



Western Blot analysis of 3T3 cells using Recoverin Polyclonal Antibody