



## RECS1 Polyclonal Antibody

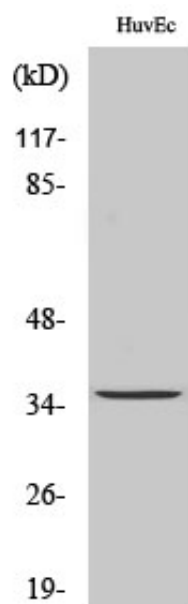
Catalog_no :	AT4038
Applications :	WB,IHC-p,ELISA
Reactivity :	Human,Mouse,Rat
Category :	抗原抗体
Size :	100µg/50µg/20µg
Gene_name :	TMBIM1
Protein_name :	Protein lifeguard 3
Humangene_id :	<a href="#">64114</a>
Humanswissprot_no :	<a href="#">Q969X1</a>
Mousegene_id :	<a href="#">69660</a>
Mouseswissprot_no :	<a href="#">Q8BJZ3</a>
Immunogen :	The antiserum was produced against synthesized peptide derived from human TMBIM1. AA range:251-300
Specificity :	RECS1 Polyclonal Antibody detects endogenous levels of RECS1 protein.
Formulation :	Liquid in PBS containing 50% glycerol, 0.5% BSA and 0.02% sodium azide.
Source :	Rabbit
Dilution :	Western Blot: 1/500 - 1/2000. Immunohistochemistry: 1/100 - 1/300. ELISA: 1/40000. Not yet tested in other applications.
Purification :	The antibody was affinity-purified from rabbit antiserum by affinity-chromatography using epitope-specific immunogen.
Concentration :	1 mg/ml
Storage_stability :	-20°C/1 year
Msds :	<a href="#">MSDS_Antibody.pdf</a>
Other_name :	TMBIM1; LFG3; RECS1; PP1201; PSEC0158; Protein lifeguard 3; Protein RECS1 homolog; Transmembrane BAX inhibitor motif-containing protein 1
Molecular	35KD



Weight :

---

## Product Images



Western Blot analysis of various cells using RECS1 Polyclonal Antibody diluted at 1 : 1000