

## Renin Receptor Polyclonal Antibody

Catalog_no :	AT4048
Applications :	WB,IHC-p,IF,ELISA
Reactivity :	Human,Mouse,Rat
Category :	抗原抗体
Size :	100µg/50µg/20µg
Gene_name :	ATP6AP2
Protein_name :	Renin receptor
Humangene_id :	<a href="#">10159</a>
Humanswissprot_no :	<a href="#">Q075787</a>
Mousegene_id :	<a href="#">70495</a>
Mouseswissprot_no :	<a href="#">Q9CYN9</a>
Ratgene_id :	<a href="#">302526</a>
Ratswissprot_no :	<a href="#">Q6AXS4</a>
Immunogen :	The antiserum was produced against synthesized peptide derived from human Caper. AA range:171-220
Specificity :	Renin Receptor Polyclonal Antibody detects endogenous levels of Renin Receptor protein.
Formulation :	Liquid in PBS containing 50% glycerol, 0.5% BSA and 0.02% sodium azide.
Source :	Rabbit
Dilution :	Western Blot: 1/500 - 1/2000. Immunohistochemistry: 1/100 - 1/300. Immunofluorescence: 1/200 - 1/1000. ELISA: 1/20000. Not yet tested in other applications.
Purification :	The antibody was affinity-purified from rabbit antiserum by affinity-chromatography using epitope-specific immunogen.
Concentration :	1 mg/ml
Storage_stability :	-20°C/1 year

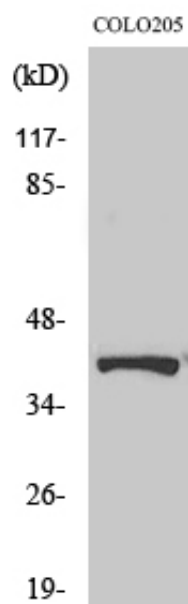


MsdS : [MSDS\\_Antibody.pdf](#)

Other\_name : [ATP6AP2; ATP6IP2; CAPER; ELDF10; HT028; MSTP009; PSEC0072; Renin receptor; ATPase H\(+\)-transporting lysosomal accessory protein 2; ATPase H\(+\)-transporting lysosomal-interacting protein 2; ER-localized type I transmembrane adaptor; Embryoni](#)

Molecular Weight : [39KD](#)

## Product Images



Western Blot analysis of various cells using Renin Receptor Polyclonal Antibody