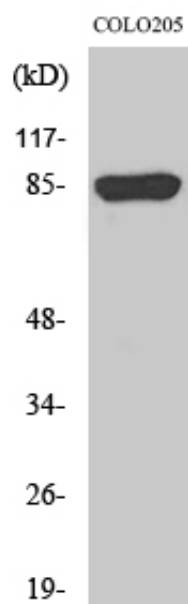


REP-2 Polyclonal Antibody

Catalog_no :	AT4050
Applications :	WB,IHC-p,ELISA
Reactivity :	Human
Category :	抗原抗体
Size :	100µg/50µg/20µg
Gene_name :	CHML
Protein_name :	Rab proteins geranylgeranyltransferase component A 2
Humangene_id :	1122
Humanswissprot_no :	P26374
Immunogen :	The antiserum was produced against synthesized peptide derived from human CHML. AA range:128-177
Specificity :	REP-2 Polyclonal Antibody detects endogenous levels of REP-2 protein.
Formulation :	Liquid in PBS containing 50% glycerol, 0.5% BSA and 0.02% sodium azide.
Source :	Rabbit
Dilution :	Western Blot: 1/500 - 1/2000. Immunohistochemistry: 1/100 - 1/300. ELISA: 1/5000. Not yet tested in other applications.
Purification :	The antibody was affinity-purified from rabbit antiserum by affinity-chromatography using epitope-specific immunogen.
Concentration :	1 mg/ml
Storage_stability :	-20°C/1 year
Msds :	MSDS_Antibody.pdf
Other_name :	CHML; REP2; Rab proteins geranylgeranyltransferase component A 2; Choroideraemia-like protein; Rab escort protein 2; REP-2
Molecular Weight :	85KD

Product Images



Western Blot analysis of various cells using REP-2
Polyclonal Antibody diluted at 1 : 1000