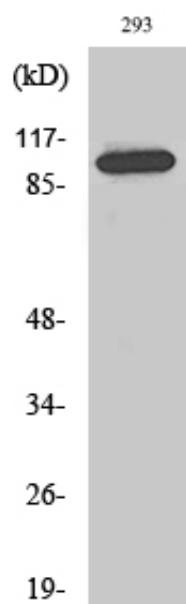




## Repo-Man Polyclonal Antibody

Catalog_no :	AT4053
Applications :	WB,IHC-p,ELISA
Reactivity :	Human
Category :	抗原抗体
Size :	100µg/50µg/20µg
Gene_name :	CDCA2
Protein_name :	Cell division cycle-associated protein 2
Humangene_id :	<a href="#">157313</a>
Humanswissprot_no :	<a href="#">Q69YH5</a>
Immunogen :	The antiserum was produced against synthesized peptide derived from human CDCA2. AA range:511-560
Specificity :	Repo-Man Polyclonal Antibody detects endogenous levels of Repo-Man protein.
Formulation :	Liquid in PBS containing 50% glycerol, 0.5% BSA and 0.02% sodium azide.
Source :	Rabbit
Dilution :	Western Blot: 1/500 - 1/2000. Immunohistochemistry: 1/100 - 1/300. ELISA: 1/5000. Not yet tested in other applications.
Purification :	The antibody was affinity-purified from rabbit antiserum by affinity-chromatography using epitope-specific immunogen.
Concentration :	1 mg/ml
Storage_stability :	-20°C/1 year
Msds :	MSDS_Antibody.pdf
Other_name :	CDCA2; Cell division cycle-associated protein 2; Recruits PP1 onto mitotic chromatin at anaphase protein; Repo-Man
Molecular Weight :	113KD

## Product Images



Western Blot analysis of various cells using Repo-Man Polyclonal Antibody diluted at 1 : 2000 cells nucleus extracted by Minute TM Cytoplasmic and Nuclear Fractionation kit (SC-003, Inventbiotech, MN, USA).