

Ret Polyclonal Antibody

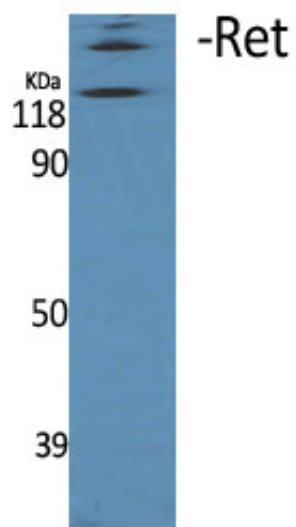
Catalog_no :	AT4056
Applications :	WB,IHC-p,IF,ELISA
Reactivity :	Human,Mouse,Rat
Category :	抗原抗体
Size :	100µg/50µg/20µg
Gene_name :	RET
Protein_name :	Proto-oncogene tyrosine-protein kinase receptor Ret
Humangene_id :	5979
Humanswissprot_no :	P07949
Mousegene_id :	19713
Mouseswissprot_no :	P35546
Immunogen :	The antiserum was produced against synthesized peptide derived from human RET. AA range:881-930
Specificity :	Ret Polyclonal Antibody detects endogenous levels of Ret protein.
Formulation :	Liquid in PBS containing 50% glycerol, 0.5% BSA and 0.02% sodium azide.
Source :	Rabbit
Dilution :	Western Blot: 1/500 - 1/2000. Immunohistochemistry: 1/100 - 1/300. Immunofluorescence: 1/200 - 1/1000. ELISA: 1/20000. Not yet tested in other applications.
Purification :	The antibody was affinity-purified from rabbit antiserum by affinity-chromatography using epitope-specific immunogen.
Concentration :	1 mg/ml
Storage_stability :	-20°C/1 year
Msds :	MSDS_Antibody.pdf
Other_name :	RET; CDHF12; CDHR16; PTC; RET51; Proto-oncogene tyrosine-protein kinase receptor Ret; Cadherin family member 12; Proto-oncogene c-Ret



Molecular
Weight :

170KD

Product Images



Western Blot analysis of various cells using Ret Polyclonal Antibody