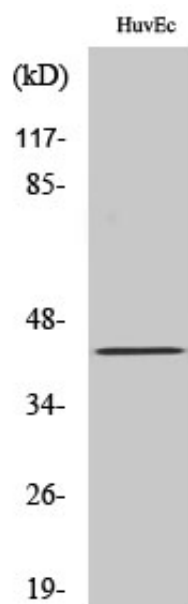




RFPL4A Polyclonal Antibody

Catalog_no :	AT4062
Applications :	WB,ELISA
Reactivity :	Human
Category :	抗原抗体
Size :	100µg/50µg/20µg
Gene_name :	RFPL4A
Protein_name :	Ret finger protein-like 4A
Humangene_id :	342931
Humanswissprot_no :	A6NLU0
Immunogen :	The antiserum was produced against synthesized peptide derived from human RFPL4A. AA range:155-204
Specificity :	RFPL4A Polyclonal Antibody detects endogenous levels of RFPL4A protein.
Formulation :	Liquid in PBS containing 50% glycerol, 0.5% BSA and 0.02% sodium azide.
Source :	Rabbit
Dilution :	Western Blot: 1/500 - 1/2000. ELISA: 1/5000. Not yet tested in other applications.
Purification :	The antibody was affinity-purified from rabbit antiserum by affinity-chromatography using epitope-specific immunogen.
Concentration :	1 mg/ml
Storage_stability :	-20°C/1 year
Msds :	MSDS_Antibody.pdf
Other_name :	RFPL4A; RFPL4; RNF210; Ret finger protein-like 4A; RING finger protein 210
Molecular Weight :	42KD

Product Images



Western Blot analysis of various cells using RFPL4A Polyclonal Antibody