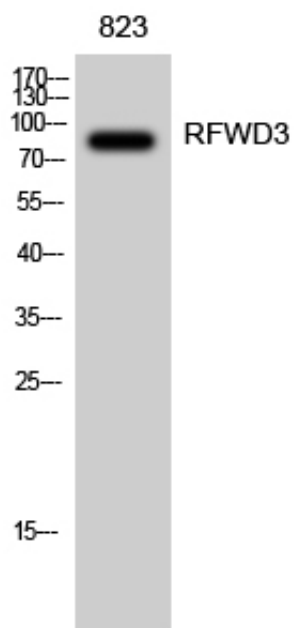


## RFWD3 Polyclonal Antibody

Catalog_no :	AT4064
Applications :	WB,IHC-p,ELISA
Reactivity :	Human
Category :	抗原抗体
Size :	100µg/50µg/20µg
Gene_name :	RFWD3
Protein_name :	E3 ubiquitin-protein ligase RFWD3
Humangene_id :	<a href="#">55159</a>
Humanswissprot_no :	<a href="#">Q6PCD5</a>
Immunogen :	The antiserum was produced against synthesized peptide derived from human RFWD3. AA range:374-423
Specificity :	RFWD3 Polyclonal Antibody detects endogenous levels of RFWD3 protein.
Formulation :	Liquid in PBS containing 50% glycerol, 0.5% BSA and 0.02% sodium azide.
Source :	Rabbit
Dilution :	Western Blot: 1/500 - 1/2000. Immunohistochemistry: 1/100 - 1/300. ELISA: 1/40000. Not yet tested in other applications.
Purification :	The antibody was affinity-purified from rabbit antiserum by affinity-chromatography using epitope-specific immunogen.
Concentration :	1 mg/ml
Storage_stability :	-20°C/1 year
Msds :	MSDS_Antibody.pdf
Other_name :	RFWD3; RNF201; E3 ubiquitin-protein ligase RFWD3; RING finger and WD repeat domain-containing protein 3; RING finger protein 201
Molecular Weight :	85KD

## Product Images



Western Blot analysis of 823 cells using RFWD3  
Polyclonal Antibody diluted at 1 : 2000