



RFX3 Polyclonal Antibody

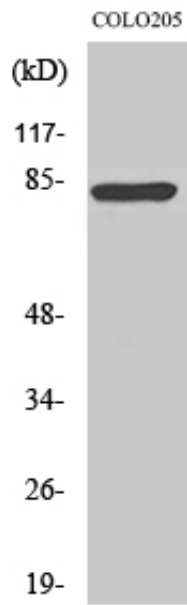
Catalog_no :	AT4066
Applications :	WB,IHC-p,ELISA
Reactivity :	Human,Mouse
Category :	抗原抗体
Size :	100µg/50µg/20µg
Gene_name :	RFX3
Protein_name :	Transcription factor RFX3
Humangene_id :	5991
Humanswissprot_no :	P48380
Mousegene_id :	19726
Mouseswissprot_no :	P48381
Immunogen :	The antiserum was produced against synthesized peptide derived from human RFX3. AA range:641-690
Specificity :	RFX3 Polyclonal Antibody detects endogenous levels of RFX3 protein.
Formulation :	Liquid in PBS containing 50% glycerol, 0.5% BSA and 0.02% sodium azide.
Source :	Rabbit
Dilution :	Western Blot: 1/500 - 1/2000. Immunohistochemistry: 1/100 - 1/300. ELISA: 1/40000. Not yet tested in other applications.
Purification :	The antibody was affinity-purified from rabbit antiserum by affinity-chromatography using epitope-specific immunogen.
Concentration :	1 mg/ml
Storage_stability :	-20°C/1 year
Msds :	MSDS_Antibody.pdf
Other_name :	RFX3; Transcription factor RFX3; Regulatory factor X 3
Molecular Weight :	84KD



专注二抗产品

Biodragon旗下品牌

Product Images



Western Blot analysis of various cells using RFX3 Polyclonal Antibody cells nucleus extracted by Minute TM Cytoplasmic and Nuclear Fractionation kit (SC-003, Invent biotech, MN, USA).