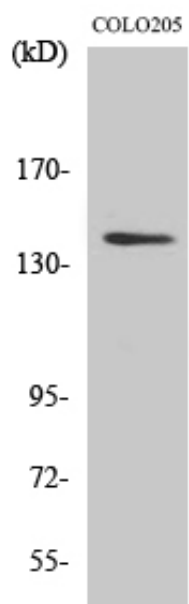


RGAG1 Polyclonal Antibody

Catalog_no :	AT4067
Applications :	WB,ELISA
Reactivity :	Human,Mouse
Category :	抗原抗体
Size :	100µg/50µg/20µg
Gene_name :	RGAG1
Protein_name :	Retrotransposon gag domain-containing protein 1
Humangene_id :	57529
Humanswissprot_no :	Q8NET4
Mouseswissprot_no :	Q32KG4
Immunogen :	The antiserum was produced against synthesized peptide derived from human RGAG1. AA range:1331-1380
Specificity :	RGAG1 Polyclonal Antibody detects endogenous levels of RGAG1 protein.
Formulation :	Liquid in PBS containing 50% glycerol, 0.5% BSA and 0.02% sodium azide.
Source :	Rabbit
Dilution :	Western Blot: 1/500 - 1/2000. ELISA: 1/40000. Not yet tested in other applications.
Purification :	The antibody was affinity-purified from rabbit antiserum by affinity-chromatography using epitope-specific immunogen.
Concentration :	1 mg/ml
Storage_stability :	-20°C/1 year
Msds :	MSDS_Antibody.pdf
Other_name :	RGAG1; KIAA1318; Retrotransposon gag domain-containing protein 1; Tumor antigen BJ-HCC-23
Molecular Weight :	144KD

Product Images



Western Blot analysis of various cells using RGAG1 Polyclonal Antibody