

RGS10 Polyclonal Antibody

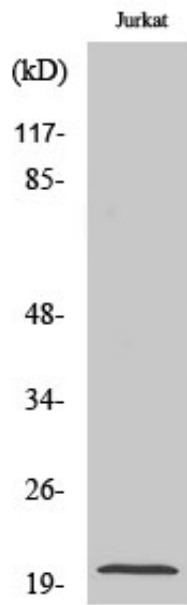
Catalog_no :	AT4071
Applications :	WB,IHC-p,ELISA
Reactivity :	Human,Mouse,Rat
Category :	抗原抗体
Size :	100µg/50µg/20µg
Gene_name :	RGS10
Protein_name :	Regulator of G-protein signaling 10
Humangene_id :	6001
Humanswissprot_no :	O43665
Mousegene_id :	67865
Mouseswissprot_no :	Q9CQE5
Ratswissprot_no :	P49806
Immunogen :	The antiserum was produced against synthesized peptide derived from human RGS10. AA range:80-129
Specificity :	RGS10 Polyclonal Antibody detects endogenous levels of RGS10 protein.
Formulation :	Liquid in PBS containing 50% glycerol, 0.5% BSA and 0.02% sodium azide.
Source :	Rabbit
Dilution :	Western Blot: 1/500 - 1/2000. Immunohistochemistry: 1/100 - 1/300. ELISA: 1/10000. Not yet tested in other applications.
Purification :	The antibody was affinity-purified from rabbit antiserum by affinity-chromatography using epitope-specific immunogen.
Concentration :	1 mg/ml
Storage_stability :	-20°C/1 year
Msds :	MSDS_Antibody.pdf
Other_name :	RGS10; Regulator of G-protein signaling 10; RGS10



Molecular
Weight :

20KD

Product Images



Western Blot analysis of various cells using RGS10 Polyclonal Antibody