



## RGS12 Polyclonal Antibody

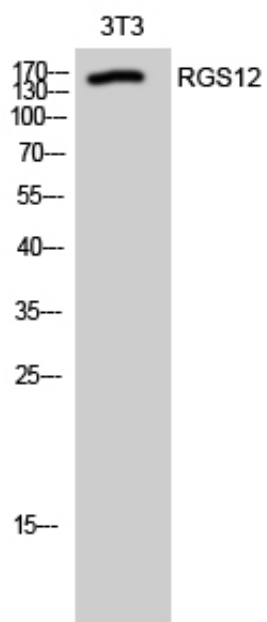
Catalog_no :	AT4072
Applications :	WB,ELISA
Reactivity :	Human,Mouse,Rat
Category :	抗原抗体
Size :	100µg/50µg/20µg
Gene_name :	RGS12
Protein_name :	Regulator of G-protein signaling 12
Humangene_id :	<a href="#">6002</a>
Humanswissprot_no :	<a href="#">O14924</a>
Mousegene_id :	<a href="#">71729</a>
Mouseswissprot_no :	<a href="#">Q8CGE9</a>
Ratgene_id :	<a href="#">54292</a>
Ratswissprot_no :	<a href="#">O08774</a>
Immunogen :	The antiserum was produced against synthesized peptide derived from human RGS12. AA range:141-190
Specificity :	RGS12 Polyclonal Antibody detects endogenous levels of RGS12 protein.
Formulation :	Liquid in PBS containing 50% glycerol, 0.5% BSA and 0.02% sodium azide.
Source :	Rabbit
Dilution :	Western Blot: 1/500 - 1/2000. ELISA: 1/40000. Not yet tested in other applications.
Purification :	The antibody was affinity-purified from rabbit antiserum by affinity-chromatography using epitope-specific immunogen.
Concentration :	1 mg/ml
Storage_stability :	-20°C/1 year
Msds :	<a href="#">MSDS_Antibody.pdf</a>



Other\_name : RGS12; Regulator of G-protein signaling 12; RGS12

Molecular Weight : 160KD

## Product Images



Western Blot analysis of 3T3 cells using RGS12 Polyclonal Antibody cells nucleus extracted by Minute TM Cytoplasmic and Nuclear Fractionation kit (SC-003, Inventbiotech, MN, USA).