

RGS14 Polyclonal Antibody

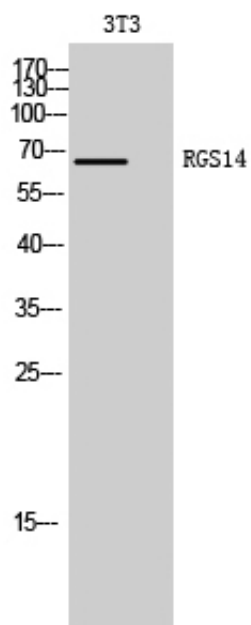
Catalog_no :	AT4073
Applications :	WB,ELISA
Reactivity :	Human,Mouse,Rat
Category :	抗原抗体
Size :	100µg/50µg/20µg
Gene_name :	RGS14
Protein_name :	Regulator of G-protein signaling 14
Humangene_id :	10636
Humanswissprot_no :	O43566
Mousegene_id :	51791
Mouseswissprot_no :	P97492
Ratgene_id :	114705
Ratswissprot_no :	O08773
Immunogen :	The antiserum was produced against synthesized peptide derived from human RGS14. AA range:125-174
Specificity :	RGS14 Polyclonal Antibody detects endogenous levels of RGS14 protein.
Formulation :	Liquid in PBS containing 50% glycerol, 0.5% BSA and 0.02% sodium azide.
Source :	Rabbit
Dilution :	Western Blot: 1/500 - 1/2000. ELISA: 1/20000. Not yet tested in other applications.
Purification :	The antibody was affinity-purified from rabbit antiserum by affinity-chromatography using epitope-specific immunogen.
Concentration :	1 mg/ml
Storage_stability :	-20°C/1 year
Msds :	MSDS_Antibody.pdf



Other_name : RGS14; Regulator of G-protein signaling 14; RGS14

Molecular Weight : 65KD

Product Images



Western Blot analysis of 3T3 cells using RGS14 Polyclonal Antibody cells nucleus extracted by Minute TM Cytoplasmic and Nuclear Fractionation kit (SC-003, Inventbiotech, MN, USA).