

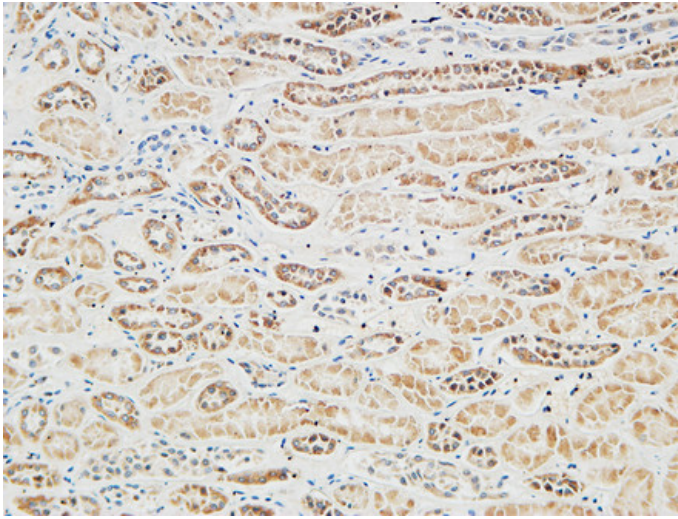
RGS16 Polyclonal Antibody

Catalog_no :	AT4074
Applications :	IHC-p,IF,ELISA
Reactivity :	Human,Mouse,Rat
Category :	抗原抗体
Size :	100µg/50µg/20µg
Gene_name :	RGS16
Protein_name :	Regulator of G-protein signaling 16
Humangene_id :	6004
Humanswissprot_no :	O15492
Mousegene_id :	19734
Mouseswissprot_no :	P97428
Ratswissprot_no :	P56700
Immunogen :	The antiserum was produced against synthesized peptide derived from human RGS16. AA range:141-190
Specificity :	RGS16 Polyclonal Antibody detects endogenous levels of RGS16 protein.
Formulation :	Liquid in PBS containing 50% glycerol, 0.5% BSA and 0.02% sodium azide.
Source :	Rabbit
Dilution :	Immunohistochemistry: 1/100 - 1/300. Immunofluorescence: 1/200 - 1/1000. ELISA: 1/20000. Not yet tested in other applications.
Purification :	The antibody was affinity-purified from rabbit antiserum by affinity-chromatography using epitope-specific immunogen.
Concentration :	1 mg/ml
Storage_stability :	-20°C/1 year
Msds :	MSDS_Antibody.pdf
Other_name :	RGS16; RGSR; Regulator of G-protein signaling 16; RGS16; A28-RGS14P; Retinal-specific

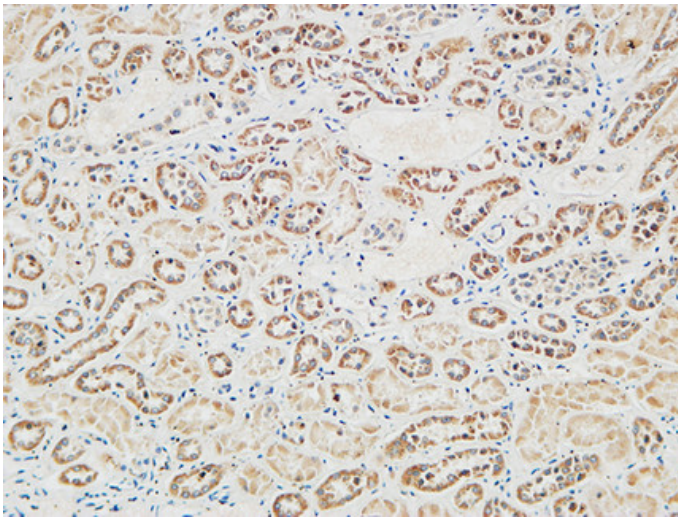


RGS; RGS-r; hRGS-r; Retinally abundant regulator of G-protein signaling

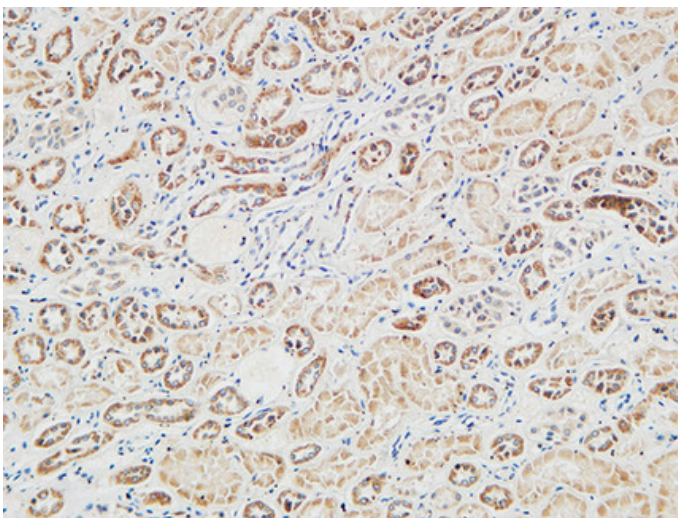
Product Images



Immunohistochemical analysis of paraffin-embedded Human Right kidney. 1, Antibody was diluted at 1:100(4°,overnight). 2, High-pressure and temperature EDTA, pH8.0 was used for antigen retrieval. 3,Secondary antibody was diluted at 1:200(room temperature, 30min).



Immunohistochemical analysis of paraffin-embedded Human Right kidney. 1, Antibody was diluted at 1:100(4°,overnight). 2, High-pressure and temperature EDTA, pH8.0 was used for antigen retrieval. 3,Secondary antibody was diluted at 1:200(room temperature, 30min).



Immunohistochemical analysis of paraffin-embedded Human Right kidney. 1, Antibody was diluted at 1:100(4°,overnight). 2, High-pressure and temperature EDTA, pH8.0 was used for antigen retrieval. 3,Secondary antibody was diluted at 1:200(room temperature, 30min).