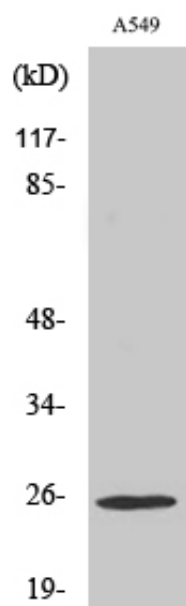


Rho GDI γ Polyclonal Antibody

Catalog_no :	AT4082
Applications :	WB,ELISA
Reactivity :	Human
Category :	抗原抗体
Size :	100 μ g/50 μ g/20 μ g
Gene_name :	ARHGDIG
Protein_name :	Rho GDP-dissociation inhibitor 3
Humangene_id :	398
Humanswissprot_no :	Q99819
Immunogen :	Synthesized peptide derived from Rho GDI γ . at AA range: 110-190
Specificity :	Rho GDI γ Polyclonal Antibody detects endogenous levels of Rho GDI γ protein.
Formulation :	Liquid in PBS containing 50% glycerol, 0.5% BSA and 0.02% sodium azide.
Source :	Rabbit
Dilution :	Western Blot: 1/500 - 1/2000. ELISA: 1/10000. Not yet tested in other applications.
Purification :	The antibody was affinity-purified from rabbit antiserum by affinity-chromatography using epitope-specific immunogen.
Concentration :	1 mg/ml
Storage_stability :	-20°C/1 year
Msds :	MSDS_Antibody.pdf
Other_name :	ARHGDIG; Rho GDP-dissociation inhibitor 3; Rho GDI 3; Rho-GDI gamma
Molecular Weight :	25KD

Product Images



Western Blot analysis of various cells using Rho GDI α Polyclonal Antibody