

## RhoBTB1/2 Polyclonal Antibody

Catalog_no :	AT4084
Applications :	WB,IHC-p,IF,ELISA
Reactivity :	Human,Mouse
Category :	抗原抗体
Size :	100µg/50µg/20µg
Gene_name :	RHOBTB1/RHOBTB2
Protein_name :	Rho-related BTB domain-containing protein 1/2
Humangene_id :	<a href="#">23221/9886</a>
Humanswissprot_no :	<a href="#">O94844/Q9BYZ6</a>
Mousegene_id :	<a href="#">69288/246710</a>
Immunogen :	The antiserum was produced against synthesized peptide derived from human RHBT2. AA range:61-110
Specificity :	RhoBTB1/2 Polyclonal Antibody detects endogenous levels of RhoBTB1/2 protein.
Formulation :	Liquid in PBS containing 50% glycerol, 0.5% BSA and 0.02% sodium azide.
Source :	Rabbit
Dilution :	Western Blot: 1/500 - 1/2000. Immunohistochemistry: 1/100 - 1/300. Immunofluorescence: 1/200 - 1/1000. ELISA: 1/5000. Not yet tested in other applications.
Purification :	The antibody was affinity-purified from rabbit antiserum by affinity-chromatography using epitope-specific immunogen.
Concentration :	1 mg/ml
Storage_stability :	-20°C/1 year
Msds :	MSDS_Antibody.pdf
Other_name :	RHOBTB1; KIAA0740; Rho-related BTB domain-containing protein 1; RHOBTB2; DBC2; KIAA0717; Rho-related BTB domain-containing protein 2; Deleted in breast cancer 2 gene protein; p83
Molecular Weight :	83KD

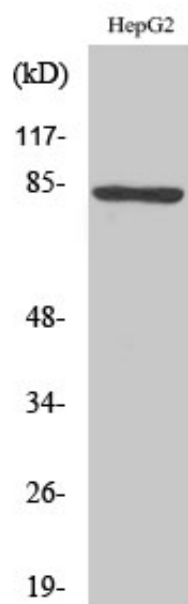


**专注二抗产品**

Biodragon旗下品牌

---

## Product Images



Western Blot analysis of various cells using RhoBTB1/2 Polyclonal Antibody