



RHOBTB3 Polyclonal Antibody

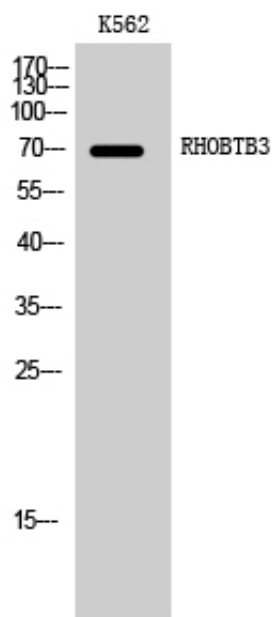
Catalog_no :	AT4085
Applications :	WB,IHC-p,ELISA
Reactivity :	Human,Mouse
Category :	抗原抗体
Size :	100µg/50µg/20µg
Gene_name :	RHOBTB3
Protein_name :	Rho-related BTB domain-containing protein 3
Humangene_id :	22836
Humanswissprot_no :	O94955
Mousegene_id :	73296
Mouseswissprot_no :	Q9CTN4
Immunogen :	The antiserum was produced against synthesized peptide derived from human RHOBTB3. AA range:335-384
Specificity :	RHOBTB3 Polyclonal Antibody detects endogenous levels of RHOBTB3 protein.
Formulation :	Liquid in PBS containing 50% glycerol, 0.5% BSA and 0.02% sodium azide.
Source :	Rabbit
Dilution :	Western Blot: 1/500 - 1/2000.IHC-p:1:50-300 ELISA: 1/20000. Not yet tested in other applications.
Purification :	The antibody was affinity-purified from rabbit antiserum by affinity-chromatography using epitope-specific immunogen.
Concentration :	1 mg/ml
Storage_stability :	-20°C/1 year
Msds :	MSDS_Antibody.pdf
Other_name :	RHOBTB3; KIAA0878; Rho-related BTB domain-containing protein 3
Molecular Weight :	70KD



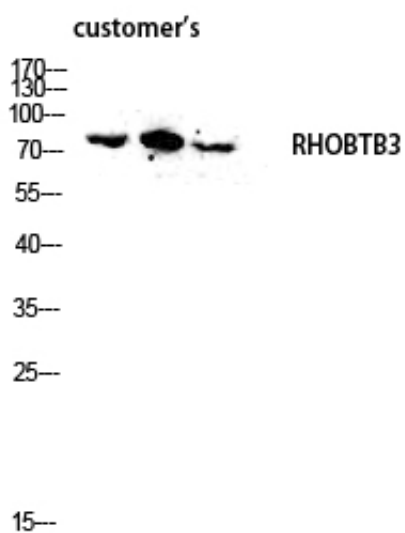
专注二抗产品

Biodragon旗下品牌

Product Images



Western Blot analysis of K562 cells using RHOBTB3 Polyclonal Antibody diluted at 1 : 2000



Western blot analysis of customer's lysis using RHOBTB3 antibody. Antibody was diluted at 1:2000