

RhoGEF p115 Polyclonal Antibody

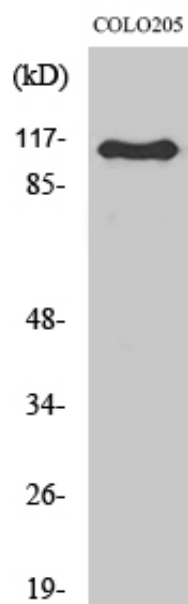
Catalog_no :	AT4088
Applications :	WB,ELISA
Reactivity :	Human,Mouse,Rat
Category :	抗原抗体
Size :	100µg/50µg/20µg
Gene_name :	ARHGEF1
Protein_name :	Rho guanine nucleotide exchange factor 1
Humangene_id :	9138
Humanswissprot_no :	Q92888
Mousegene_id :	16801
Mouseswissprot_no :	Q61210
Ratswissprot_no :	Q9Z1I6
Immunogen :	The antiserum was produced against synthesized peptide derived from human ARHGEF1. AA range:162-211
Specificity :	RhoGEF p115 Polyclonal Antibody detects endogenous levels of RhoGEF p115 protein.
Formulation :	Liquid in PBS containing 50% glycerol, 0.5% BSA and 0.02% sodium azide.
Source :	Rabbit
Dilution :	Western Blot: 1/500 - 1/2000. ELISA: 1/40000. Not yet tested in other applications.
Purification :	The antibody was affinity-purified from rabbit antiserum by affinity-chromatography using epitope-specific immunogen.
Concentration :	1 mg/ml
Storage_stability :	-20°C/1 year
Msds :	MSDS_Antibody.pdf
Other_name :	ARHGEF1; Rho guanine nucleotide exchange factor 1; 115 kDa guanine nucleotide exchange factor; p115-RhoGEF; p115RhoGEF; Sub1.5



Molecular
Weight :

105KD

Product Images



Western Blot analysis of various cells using RhoGEF p115 Polyclonal Antibody