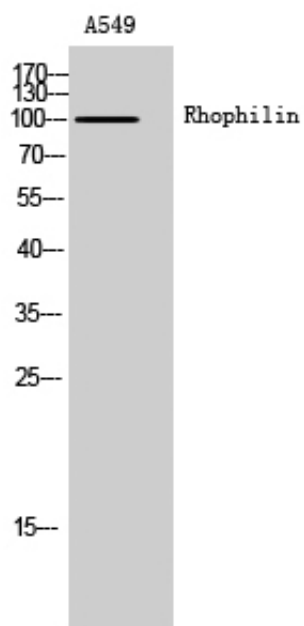




Rhophilin Polyclonal Antibody

Catalog_no :	<u>AT4089</u>
Applications :	<u>WB,ELISA</u>
Reactivity :	<u>Human</u>
Category :	<u>抗原抗体</u>
Size :	<u>100µg/50µg/20µg</u>
Gene_name :	<u>RHPN1</u>
Protein_name :	<u>Rhophilin-1</u>
Humangene_id :	<u>114822</u>
Humanswissprot_no :	<u>Q8TCX5</u>
Immunogen :	<u>The antiserum was produced against synthesized peptide derived from human RHPN1. AA range:474-523</u>
Specificity :	<u>Rhophilin Polyclonal Antibody detects endogenous levels of Rhophilin protein.</u>
Formulation :	<u>Liquid in PBS containing 50% glycerol, 0.5% BSA and 0.02% sodium azide.</u>
Source :	<u>Rabbit</u>
Dilution :	<u>Western Blot: 1/500 - 1/2000. ELISA: 1/10000. Not yet tested in other applications.</u>
Purification :	<u>The antibody was affinity-purified from rabbit antiserum by affinity-chromatography using epitope-specific immunogen.</u>
Concentration :	<u>1 mg/ml</u>
Storage_stability :	<u>-20°C/1 year</u>
Msds :	<u>MSDS_Antibody.pdf</u>
Other_name :	<u>RHPN1; KIAA1929; Rhophilin-1; GTP-Rho-binding protein 1</u>
Molecular Weight :	<u>100KD</u>

Product Images



Western Blot analysis of A549 cells using Rhophilin Polyclonal Antibody