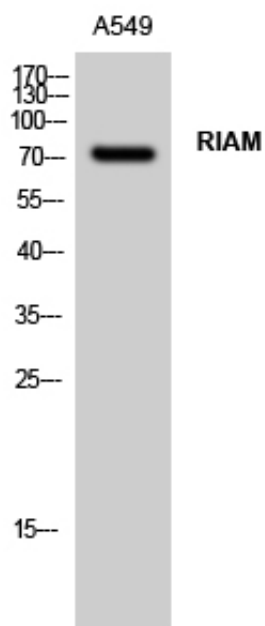




RIAM Polyclonal Antibody

Catalog_no :	AT4091
Applications :	WB,ELISA
Reactivity :	Human
Category :	抗原抗体
Size :	100µg/50µg/20µg
Gene_name :	APBB1IP
Protein_name :	Amyloid beta A4 precursor protein-binding family B member 1-interacting protein
Humangene_id :	54518
Humanswissprot_no :	Q7Z5R6
Immunogen :	Synthesized peptide derived from RIAM . at AA range: 430-510
Specificity :	RIAM Polyclonal Antibody detects endogenous levels of RIAM protein.
Formulation :	Liquid in PBS containing 50% glycerol, 0.5% BSA and 0.02% sodium azide.
Source :	Rabbit
Dilution :	Western Blot: 1/500 - 1/2000. ELISA: 1/10000. Not yet tested in other applications.
Purification :	The antibody was affinity-purified from rabbit antiserum by affinity-chromatography using epitope-specific immunogen.
Concentration :	1 mg/ml
Storage_stability :	-20°C/1 year
Msds :	MSDS_Antibody.pdf
Other_name :	APBB1IP; PREL1; RARP1; RIAM; Amyloid beta A4 precursor protein-binding family B member 1-interacting protein; APBB1-interacting protein 1; Proline-rich EVH1 ligand 1; PREL-1; Proline-rich protein 73; Rap1-GTP-interacting adapter molecule; R
Molecular Weight :	73KD

Product Images



Western Blot analysis of A549 cells using RIAM Polyclonal Antibody